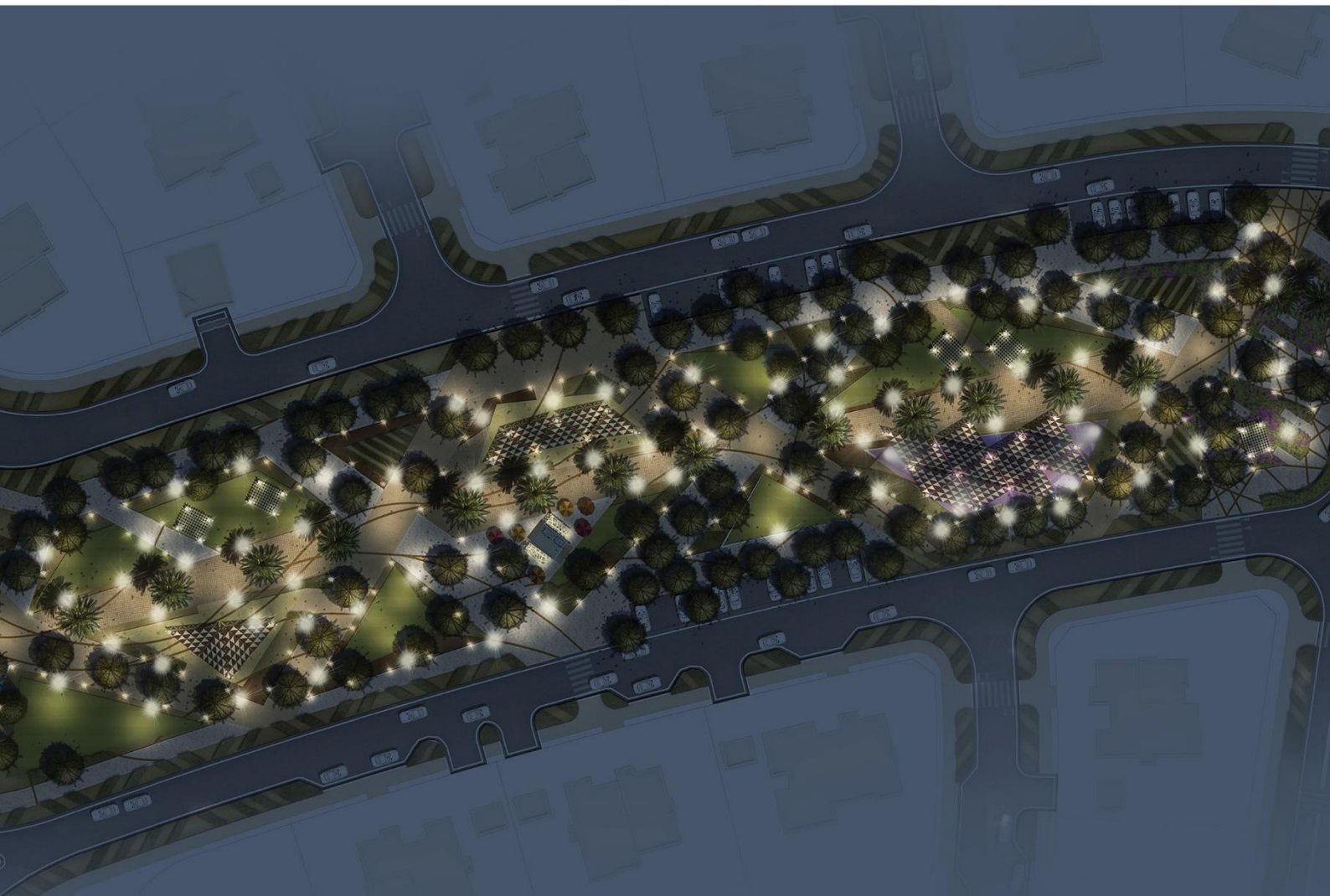


Lighting Design Austria

Al Falah / Abu Dhabi, U.A.E.

Public realm lighting design validation and value engineering

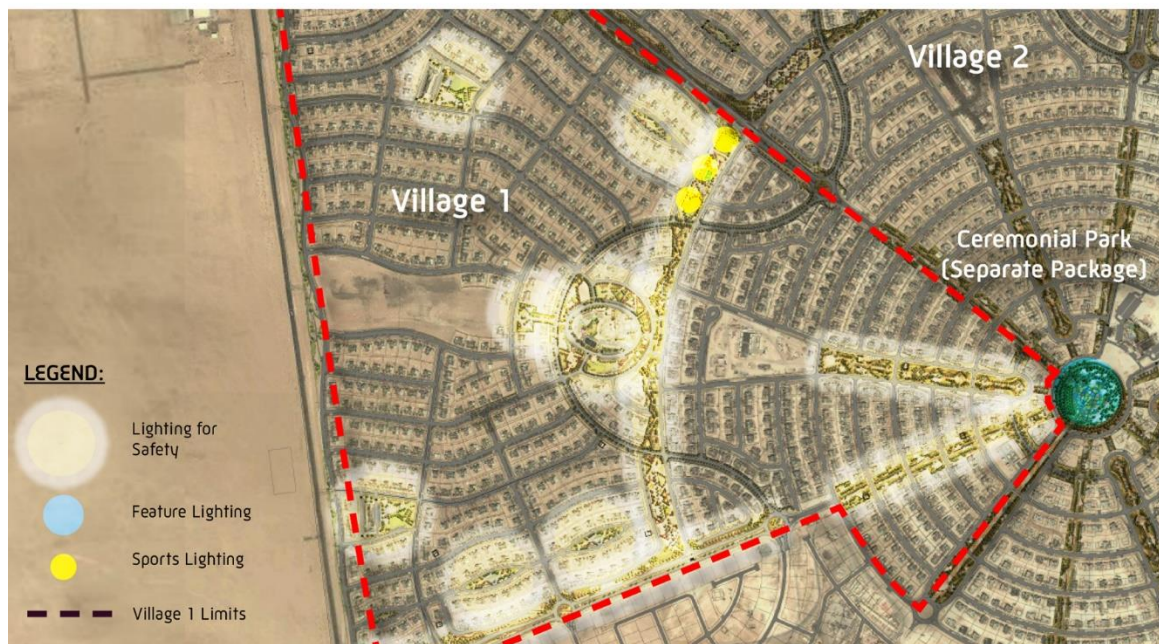
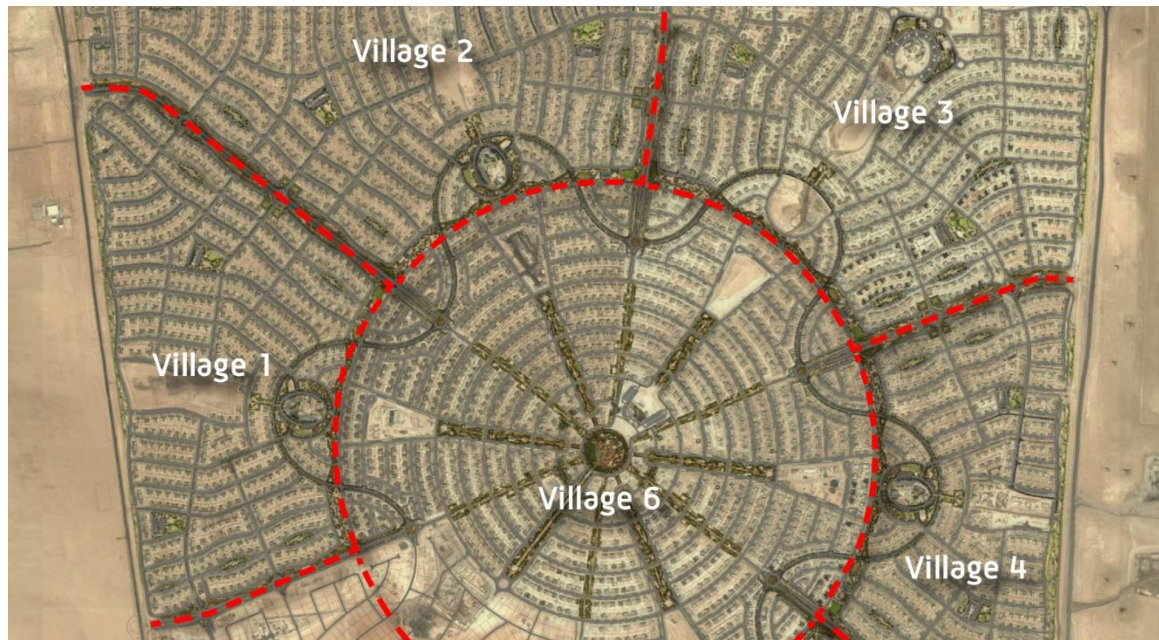


1 | Al Falah Villages Layout

Above:
Villages layout masterplan

Below:
Village concept lighting

Client:
Khatib & Alami
Public realm lighting design
validation and value engineering
Location: *Abu Dhabi/U.A.E.*
Year: 2013



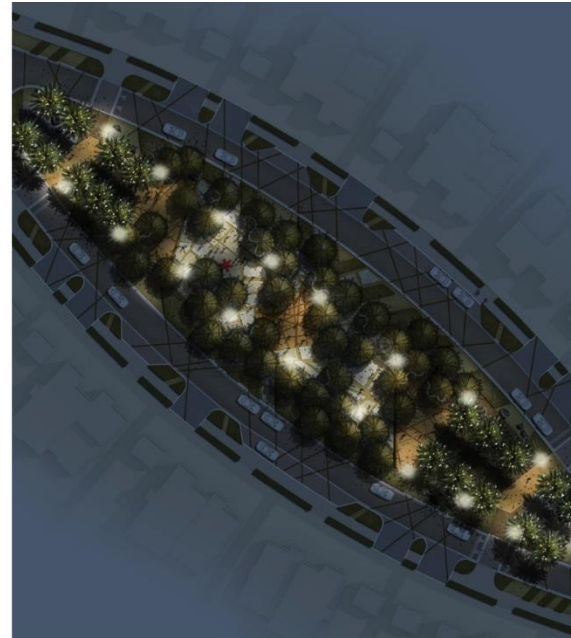
- LEGEND:**
- Lighting for Safety
 - Feature Lighting
 - Sports Lighting
 - Village 1 Limits

2 | Lighting Visualizations – Sample Areas

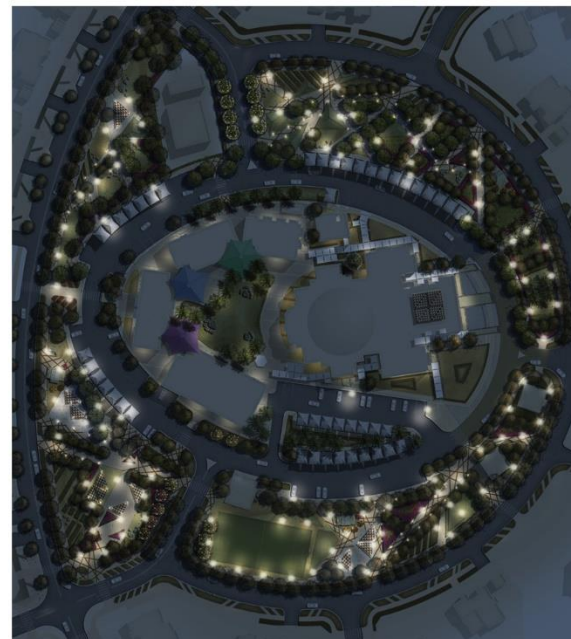
Above and Below Left:
Daytime landscape plans



Above and Below Right:
Night time lighting visualizations



Client:
Khatib & Alami
Public realm lighting design
validation and value engineering
Location: *Abu Dhabi/U.A.E.*
Year: 2013



3 | Lighting Types

Presentation of different types of lighting and areas covered

Client:
Khatib & Alami
Public realm lighting design
validation and value engineering
Location: *Abu Dhabi/U.A.E.*
Year: 2013



Ambient/General Lighting



Task Lighting



Accent Lighting



Decorative Lighting



Contact

Headquarter Austria:

Lighting Design Austria e.U.
Marienstrasse 23
3032 Eichgraben
Austria



Tel / Fax: +43 2773 435 34
Mobile: +43 664 16 00 140
E-mail: office@LDA.at
Web: www.LDA.at

Lighting Design Austria on Youtube:
<http://www.youtube.com/watch?v=MEsv73-gV1k>

Directions

Our office in Eichgraben will welcome you based on pre-agreed schedules for meetings:

A) from Vienna on the A1 motorway exit Pressbaum and the federal highway 44 to Eichgraben (distance 25 km).

B) from Linz / Salzburg on the A1 motorway exit St. Christophen, then on the federal highway 19 to Neulengbach and the federal highway 44 to Eichgraben.

© 2013, all rights reserved. Reproduction in whole or in part is prohibited without exception.