

Lighting Design Austria Pre-Qualification





Contents

1 	Foreword	5
1.1 	Historical Developments	5
1.2 	Lighting Terms	6
2 	Explanation	7
3 	History and Milestones	9
4 	Own Light Laboratory	11
5 	Company Structure / Organization	12
5.1 	Headquarters Austria and Czech Republic	12
5.2 	Project Team Middle East	13
6 	Portraits Employees	14
6.1 	Helmut Regvart / Owner / CEO	15
6.2 	Renate Regvart / Administration	16
6.3 	Raphaela Regvart / Document Control / Marketing EU	17
6.4 	Lisa Wong / Lighting Design	18
6.5 	Shanthosh Chandrasekar/ Lighting Design	19
6.6 	Christoph Wallnöfer / Lighting Design	20
6.7 	Anton Vanheelen / Electrical Design	21
6.8 	Lukasz Franek / Engineering	22
6.9 	Roman Krop / Key Account Manager	23
6.10 	Jaroslav Šnobl / Engineering	24
6.11 	Jan Zálešák / Engineering	25

7 	Lighting Design in Detail	26
7.1 	Daylighting	26
7.2 	Artificial Lighting Design	28
8 	Our Services - Your Added Value	31
8.1 	Artificial Lighting Design	31
8.2 	"Value Engineering" Optimization of Existing Designs and/or Completed Projects	31
8.3 	Event and Stage Lighting	31
8.4 	Outdoor and/or Effect Lighting	32
8.5 	Efficiency Studies	32
8.6 	Lecturing	32
9 	Selected reference projects	33
9.1 	Intercontinental Hotel / Warsaw, Poland	34
9.2 	Hilton Hotel / Jeddah, KSA	35
9.3 	Federation Tower / Moscow, Russia	36
9.4 	Commercial Bank / Abu Dhabi, UAE	37
9.5 	Injazat Data Centre / Abu Dhabi, UAE	38
9.6 	Vienna North Railway Station / Vienna, Austria	39
9.7 	Downtown of Waidhofen an der Ybbs / Austria	40
9.8 	House of Industry Façade Lighting / Vienna, Austria	41
9.9 	QMA Damien Hirst / Doha, Qatar	42
9.10 	Kempinski Hotel / Vienna, Austria	43
9.11 	Zurich Airport, Dock B / Zurich, Switzerland	45
9.12 	Generali Foundation Daylight Museum / Vienna, Austria	46
9.13 	La Ville / Dubai, UAE	47
9.14 	Dubai Airport, Terminal 3 / UAE	48
9.15 	Refurbishment historic Concert Hall / Vienna, Austria	49
9.16 	Museum City of Wels / Austria	50
9.17 	Designhotel Andel`s / Prague, CZ	51
9.18 	Ringstraßengallerie / Vienna, Austria	52
9.19 	National Bank Abu Dhabi / UAE	53
9.20 	Papyrus Museum/ Vienna, Austria	54
9.21 	Austrian National Library/ Vienna, Austria	55
9.22 	Prunkstiege/ Vienna, Austria	56
9.23 	Bneid Al Qar/ Kuwait	57
9.24 	Hessa Al Mubarak/ Kuwait	58

9.25	Meraas Headquarters/ Dubai, UAE	59
9.26	The Scientific Center of Kuwait/ Kuwait	60
9.27	Aviation Boulevard/ Muscat, Oman	61
9.28	Golf Place/ Dubai, UAE	62
9.29	Doha Competition/ Doha, Qatar	63
9.30	DMA/ADM – Sustainable Lighting Handbook	64
9.31	Intercontinental Hotel RAK	65
10	References	67
10.1	Façade Lighting	67
10.2	High-rise Buildings	76
10.3	Office Buildings	80
10.4	Hotels	84
10.5	Banks and Insurance Companies	88
10.6	Shopping- and Entertainment Centers	91
10.7	Airports	95
10.8	Theaters	97
10.9	Museums	98
10.10	Places of Worship	101
10.11	Urban & Landscape	103
10.12	Universities and Schools	109
10.13	Industry Buildings	111
10.14	Multi-functional Projects	113
10.15	Value Engineering Projects	119
10.16	Competitions	122
11	Qualifications	124
11.1	Austrian Award for Innovative Consulting	125
11.2	Feedback from Clients	126
12	Contact	127

Space and light and order.
Those are the things that humans need
just as much as they need bread
or a place to sleep.

Le Corbusier

1 | Foreword

80% of our perceptions are made through the eye!

Light provides orientation, security, stimulation and well-being. This is the environment in which we are living every day. But it is not always well understood that it usually does not depend only on the "quantity" of light.

Optimum of lighting design means to us:

- ✓ the right light
- ✓ at the right time
- ✓ at the right place

1.1 | Historical Developments

300,000 years ago - Fire for heating and as light source

15.000 years ago - Light of oil and tallow lamps

260 A.D. - Lighthouse of Alexandria

378 A.D. - First municipality street lighting in Antiochia

1783 - "Coal gas" for gas-lanterns

1879 - Edison - Incandescent-bulb development to technical maturity

1883 - First electrical street-lighting for the city of Berlin

1887 - The first metal halide lamp

1982 - Development of raster technology (along with "dark-light-effect") for office and PC lighting (LDA played a big role in this part of development)

1987 - First secondary system (LDA was one of the first designers who brought up this innovation)

1998 - Eldacon Technology

2004 - Mirrortec with integrated Fresnel technology

2008 - First LED street -lighting



1.2 | Lighting Terms

The following lighting terms are useful for understanding the field of lighting design.

Luminous flux / Luminous power is the measure of the perceived power of light. Unit: lumen [lm].

Light output / Luminous efficacy is a measure of how well a light source produces visible light. It is the ratio of luminous flux to power. Depending on context, the power can be either the radiant flux of the source's output, or it can be the total electric power consumed by the source. Unit: lumen / watt [lm / W]

Luminous intensity is the power emitted by a light source in a particular direction, weighted by the luminosity function (a standardized model of the sensitivity of the human eye to different wavelengths, also known as the *luminous efficiency function*). Unit: candela [cd]

Luminance is a photometric measure of the luminous intensity per unit area of light travelling in a given direction. It describes the amount of light that passes through or is emitted from a particular area, and falls within a given solid angle. Unit: candela per square meter [cd/m²]

Illuminance is a measure of the intensity of the incident light, wavelength-weighted by the luminosity function to correlate with human brightness perception. Unit: lux [lx]

Colour rendering is a quantitative measure of the ability of a light source to reproduce the colours of various objects faithfully in comparison with an ideal or natural light source.

Colour temperature of a light source is the temperature of an ideal black-body radiator that radiates light of comparable hue to that of the light source. Unit: Kelvin (K)

Contrast - in visual perception of the real world, contrast is determined by the difference in the colour and brightness of the object and other objects within the same field of view.

2 | Explanation

The creative team of "Lighting Design Austria" (LDA) has more than 39 years' experience as a leading global engineering office in the area of natural and artificial lighting design.

The company was founded in 1978, since that time more than 400 projects are designed and executed. LDA worked already with internationally renowned architects like Sir Norman Foster / UK, Sir Richard Rogers / UK, SOM Skidmore Owings & Merrill, or BDP Building Design Partnership.

Since 2008 LDA is closely cooperating with the company ENVIspot a.s. This combination creates an international team of experts, which allows faster implementation of projects using all professional potential possible. We are where our customers are and we offer solutions that achieve world's highest quality standards.

Our design portfolio includes:

- ✓ Daylight
- ✓ Artificial light
- ✓ Outdoor Lighting - Urban-lighting
- ✓ Facade lighting
- ✓ Stage Lighting
- ✓ Landscape lighting
- ✓ Effect Lighting - Intelligent lighting systems
- ✓ Electrical-, Building- and Energy Management
- ✓ Cost Reductions - Value Engineering
- ✓ Energy Optimizations
- ✓ Green Technology Audits (Cost-/Benefit-/Environment-calculations)



In the design phase of lighting projects the reduction of energy costs and simple maintenance of the proposed lighting solutions are always an important part of our work.

The following phases can be performed individually or as a package:

- ✓ Preliminary Design - Concept Design
- ✓ Design
- ✓ Detail Design
- ✓ Preparation of tender documents
- ✓ Technical and economical evaluation of offers
- ✓ Participation in pre- contract meetings
- ✓ Negotiations with vendors/bidders on behalf of client
- ✓ Supervision of the project including hand-over to client
- ✓ Adjustment and programming of designed lighting solutions (DALI, DMX, KNX, ...)
- ✓ Light measurements, reports

Due to the many markets and wide range of projects LDA is working flexi-hours and we are not bound by "standard office hours". The markets in the Middle East, for example, require our services to be provided on Sundays and/or Public Holidays. This strategy of office hours allows permanent access to LDA from all markets and projects. The agreed project schedule timelines and deadlines are always met. All employees are committed to having direct contact with our clients, as per needs. Each project has a dedicated and assigned project manager.

Different seminars, trainings and visits to major lighting fairs worldwide are part of the permanent training program. Each employee has always the latest information on developments of the lighting market.

LDA operates for more than 39 years as an independent design and consulting company with no ties to manufacturers.



3 | History and Milestones

1978: Foundation of Lighting Design Austria in Vienna / Austria

1978 - 1980: First projects in Austria and the Netherlands

1980 - 1995: More than 20 lighting projects executed in United Kingdom

1981 - 1982: Day- and artificial lighting design of IBM headquarters in Paris

1983 - 1986: Day- and artificial lighting design of Hong Kong & Shanghai Bank in Hong Kong - development of biggest "one direction" controlled mirror

1984 - 1985: Day- and artificial lighting design of Lloyds of London HQ Building

1985 - 1986: Day- and artificial lighting design of Manchester Airport / GB

1987 - 1988: Day- and artificial lighting design of Glasgow Airport / GB

1997: Austrian Award for Innovative Consulting

1998: First projects in Eastern Europe

2000 - 2001: Competition for National Bank of Abu Dhabi / UAE (Designed and executed)

2002 - 2003: First project in Dubai / UAE

2002 - 2004: Facade lighting and landscape lighting design of Hilton Hotel and Royal Palace Hotel in Jeddah / KSA

2005 - 2007: Artificial and effect-lighting design of Dubai International Airport / New Arrival & Departure Hall - Terminal 3 - building (98.000m²)

2005: Concept design of artificial-, natural day light and architectural lighting of Federation Tower in Moscow / Russia - 435.000m² / 478m height

2007: Nomination for the Austrian Award for Innovative Consulting

2007: Development of Master Plan Policies for the interior- and exterior lighting of Dubai Waterfront - 7 Districts/ 140 Sq. Kilometres / 14.000 Hectares

2008: Pre-qualification of LDA for the tallest building in the world "Tall Tower" in Dubai – proposed height 2,700 m

2008: Electrical- and facade lighting design of a new Hard Rock Hotel Tower in Dubai



2008: Assigned landscape lighting design contract for Dubai Lagoons infrastructure project - 8.000 Hectares

2008: Beginning of cooperation between Lighting Design Austria and ENVIsport a.s.

2009: Artificial lighting design for the new terminal Dock B of Zurich International Airport

2009: Artificial lighting design for facade lighting of a new Hilton Hotel in Visegrad / Hungary

2009: Lighting Design Spa Vienna Oberlaa

2010: Lighting design for all interior and exterior areas of a new Kempinski Hotel in Vienna

2011: Presidential Palace Project / Abu Dhabi, UAE, approximately 1.5km² road- and landscape lighting (approximately 1.4 MW of connected lighting load) including electrical design

2014: Waldorf Astoria Hotel / Doha – Interior-, Exterior and Landscape Lighting

2014: Handbook for Lighting Design of Public Realm, Streets, MUGA for Abu Dhabi Municipality

2016: 4 Tower Hotel Project with Marriott, Oberoi and Retaj / Doha – Interior Lighting Design

2017: Shopping Center / KSA Façade- & LED screens, Event- & Effect Lighting

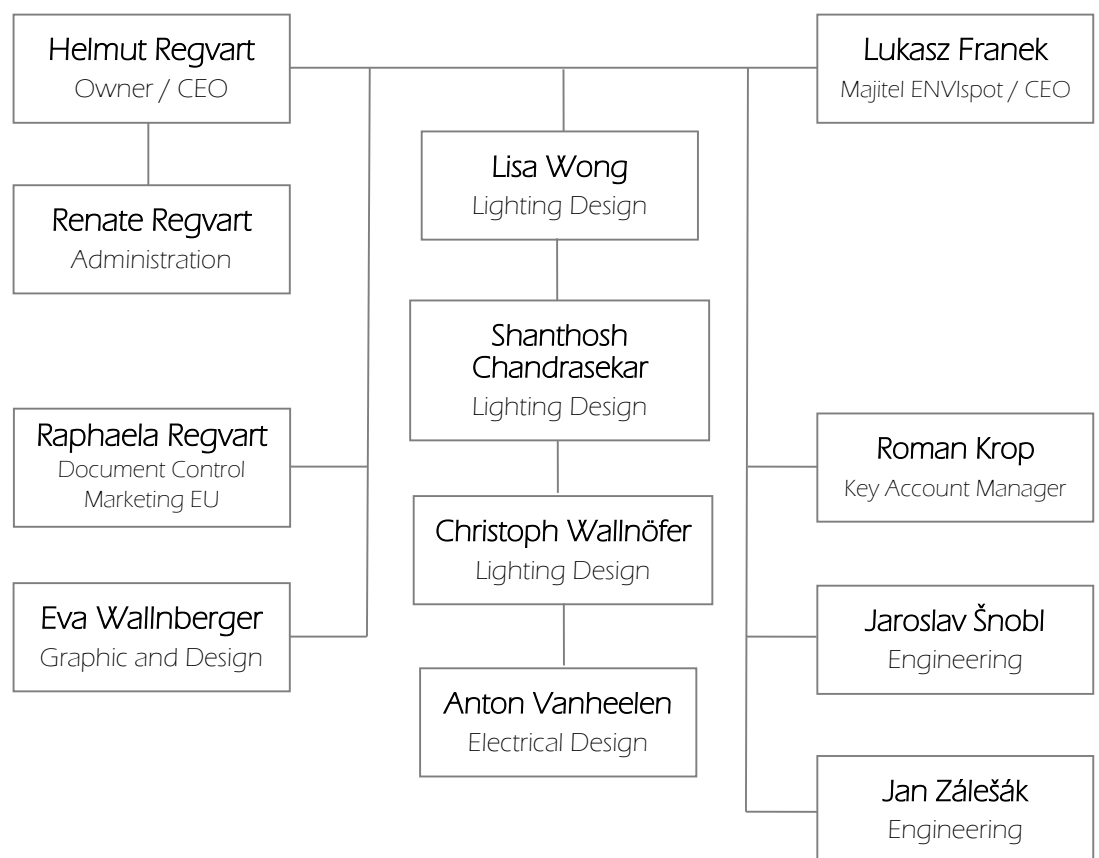
4 | Own light laboratory

LDA has its own lighting laboratory, where daylight and artificial lighting solutions can be developed. The possibility of building models, to be checked with our artificial sun and sky, or with natural daylight and real solar radiation allows us to develop day-light guiding- or sun-shading systems within a very short time frame. Currently, however, testing facilities are in place, but main developments are done recently through special computer programs.



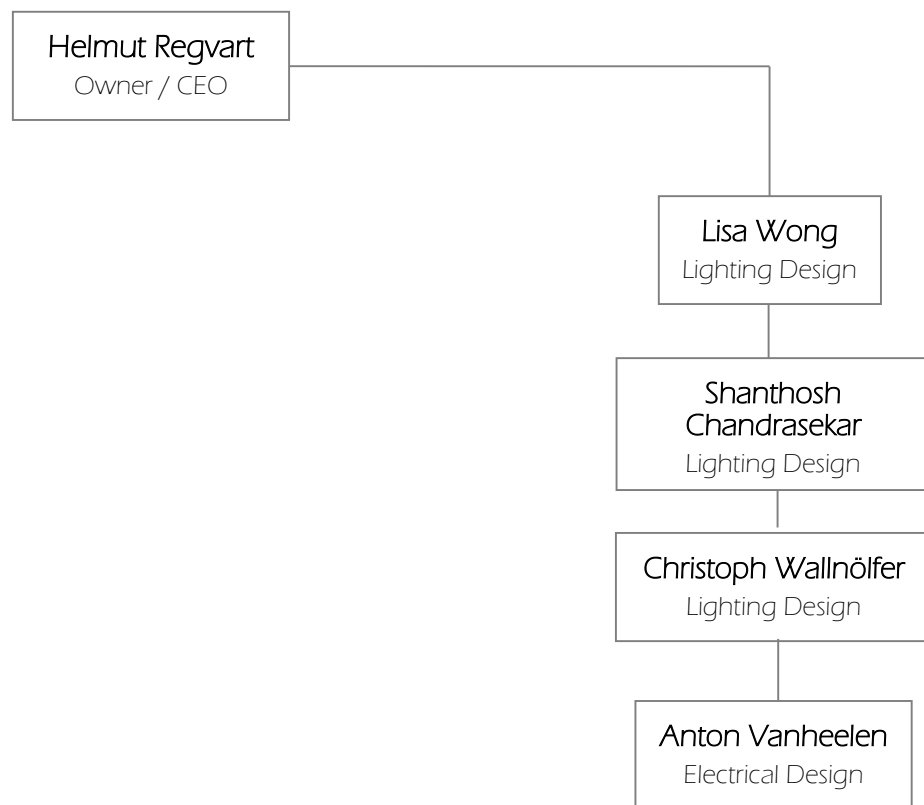
5 | Company Structure / Organization

5.1 | Headquarter Austria and Czech Republic



5 | Company Structure / Organization

5.2 | Project Team Middle East



6 | Portraits Employees

Qualifications Mr. Helmut Regvart / Owner / CEO

Qualifications Mrs. Renate Regvart / Administration

Qualifications Ms. Raphaela Regvart / Document Control - Marketing

Qualifications Ms. Lisa Wong / Lighting Design

Qualifications Mr. Shanthosh Chandrasekar / Lighting Design

Qualifications Mr. Christoph Wallnöfer / Lighting Design

Qualifications Mr. Anton Vanheelen / Electrical Design

Qualifications Mr. Lukasz Franek / Engineering

Qualifications Mr. Roman Krop / Key Account Manager

Qualifications Mr. Jaroslav Šnobl / Engineering

Qualifications Mr. Jan Zálešák / Engineering



6.1 | Helmut Regvart / Owner / CEO

Headquarter Austria & Office Middle East

Marienstraße 23
3032 Eichgraben
Austria
Tel / Fax: +43 2773 435 34
Mobile: +43 664 16 00 140
Mobile: +971 50 427 4883
E-mail: helmut.regvart@LDA.at

Work Experience

Management, Principal Design Consultant at Lighting Design Austria
(August 1996 - ongoing)
Stage Lighting at Vienna State Opera House (August 1990 - August 1996)
Stage Lighting Volkstheater in Vienna (August 1980 - August 1990)

Education

Academy of Marketing and Management (September 1998 - June 2001)
Master of Stage Lighting and Stage Management
(November 1992 - October 1993)
Certification according to Event Guidelines by Municipality of Vienna
(March 1985)
Education Electromechanical & Mechanical Engineering
(August 1975 - February 1979)

Languages

German (mother tongue)
English (fluent)

Personal Data

Born in Vienna, 1959



6.2 | Renate Regvart / Administration

Headquarter Austria & Office Middle East

Marienstraße 23
3032 Eichgraben
Austria
Tel / Fax: +43 2773 435 34
E-mail: renate.regvart@LDA.at

Work Experience

Office Manager at Lighting Design Austria (August 1996 - ongoing)
Accounting, Meisl AG (1990 - 1995)
Office Management, Meisl AG (1988 - 1989)
Export Management, Meisl AG (1980 - 1988)

Education

Commercial Education for Accountants and Office Management (1975 - 1978)
HTL-Education (1974 - 1975)

Languages

German (mother tongue)
English (fluent)

Personal Data

Born in Vienna 1959



6.3 | Raphaela Regvart / Document Control and Marketing EU

Headquarter Austria & Office Middle East

Marienstraße 23
3032 Eichgraben
Austria
Tel / Fax: +43 2773 435 34
E-mail: office@LDA.at

Work Experience

Project Management, Document Control and Marketing EU at Lighting Design Austria (since January 2013)

Education

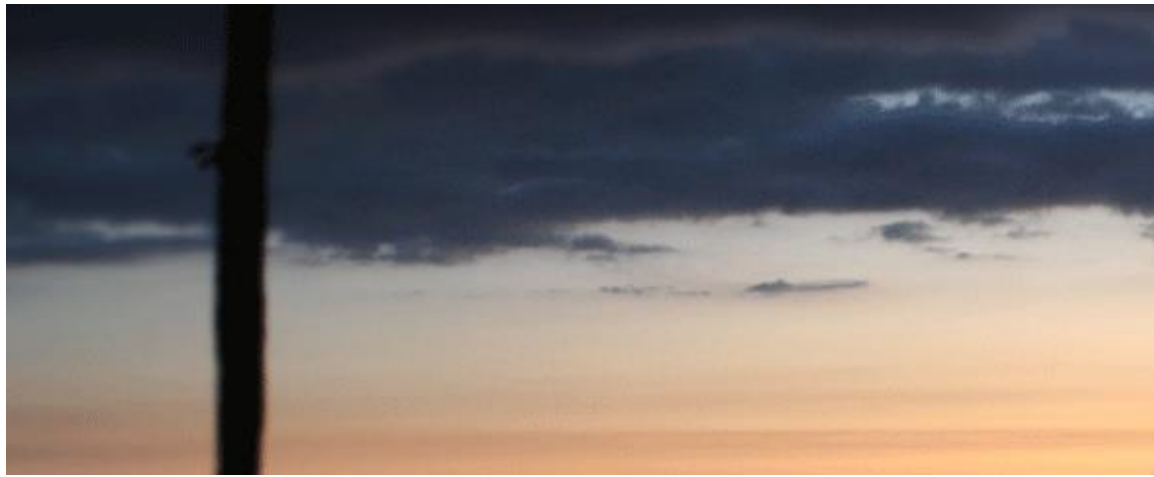
Healthcare Assistant WIFI (2010)
VBS HAK-AUL Schönborngasse 3-5, 1080 Vienna (2005-2009)
VBS HASCH Hamerlingplatz 5-6, 1080 Vienna (2002-2005)

Languages

German (mother tongue)
English (fluent)
Italian (basics)

Personal Data

Born in Vienna 1987



6.4 | Lisa Wong / Lighting Design

Headquarter Austria & Office Middle East

Marienstraße 23
3032 Eichgraben
Austria
Tel / Fax: +43 2773 435 34
E-mail: lisa.wong@LDA.at

Work Experience

Ms. Wong provides 3D visuals, concept presentations, detail and tender design for various LDA projects. She reviews clients' comments and produces revisions as requested. As well, part of her scope is managing the budget on the lighting projects she works on. She is also specifying all kinds of light fixture selections, preparing lighting calculations, and creating design reports. She is additionally responsible for internal project management at Lighting Design Austria.

Education

2008 - 2013 Virginia Polytechnic Institute and State University, USA
School of Architecture- Bachelor of Architecture
School of Theatre Arts- Bachelor of Arts in Theatrical Lighting
2020 Training for Revit Program specialized in 3D Lighting Design

Languages

English (mother tongue)
German (fluent)
Serbo-Croatian (basic knowledge)
Mandarin (basic knowledge)

Personal Data

Born in Maryland/ USA 1990



6.5 | Shanthosh Chandrasekar / Lighting Design

Headquarter Austria & Office Middle East

Marienstraße 23
3032 Eichgraben
Austria
Tel / Fax: +43 2773 435 34
E-mail: shanthosh.chandrasekar@LDA.at

Work Experience

Mr. Chandrasekar provides 3D visuals, concept presentations, detail and tender design for various LDA projects. He reviews clients' comments and produces revisions as requested. As well, part of his scope is managing the budget on the lighting projects he works on. He also specifies all kinds of light fixture selections, preparing lighting calculations, and creating design reports. He is additionally responsible for internal project management at Lighting Design Austria.

Education

2009 – 2014 School of Architecture & Planning, Anna University, Chennai, India - Bachelor of Architecture
2016- 2017 Politecnico di Milano, Italy- Masters in Lighting Design and LED technology
2020- Training in Revit Program specialized in 3D Lighting Design

Languages

Tamil (mother tongue)
English (fluent)

Personal Data

Born in Salem, TN /India 1992



6.6 | Christoph Wallnöfer / Lighting Design

Headquarter Austria & Office Middle East

Marienstraße 23
3032 Eichgraben
Austria
Tel / Fax: +43 2773 435 34
E-mail: christoph.wallnoefer@LDA.at

Work Experience

Mr. Wallnöfer provides 3D visuals, concept presentations, detail and tender design for various LDA projects. He reviews clients' comments and produces revisions as requested. As well, part of his scope is managing the budget on the lighting projects he works on. He is also specifying all kinds of light fixture selections, preparing lighting calculations, and creating design reports. He is additionally responsible for internal project management at Lighting Design Austria.

Education

2013-2015 College for Interior & Product Design
2007-2009 Mechanical Engineering, BA,
2007 -Examinations for university entrance [equivalent to A levels]

Languages

German (mother tongue)
English (fluent)
Italian (basic knowledge)

Personal Data

Born in Vienna 1986



6.7 | Anton Vanheelen / Electrical Design

Headquarter Austria & Office Middle East

Marienstraße 23
3032 Eichgraben
Austria
Tel / Fax: +43 2773 435 34
E-mail: office@LDA.at

Work Experience

HKLS / Electrical Design / AutoCAD specialist; (TB Vanheelen - since 2003)
Project Manager - Kronsteiner GmbH (2000 - 2003)
Project Manager - Geizenauer GmbH (1997 - 2000)
Project Manager - Riegel & Blamauer GmbH (1990 - 1997)

Education

License of Electrical Engineering (2003)
University of Computer Science & Engineering Process, (1999 - 2003)
School of Electrical Engineering (1992 - 1997)

Languages

Dutch (mother tongue)
German (fluent)
English (fluent)

Personal Data

Born in Holland 1970



6.8 | Lukasz Franek / Owner ENVIsport a.s. / CEO

Headquarter Czech Republic

nám. 14. října 1307/2
150 00 Praha 5
Česká republika
Tel.: +420 244 404 569
fax: +420 244 461 906
Mobil: +420 739 682 020
E-Mail: lukasz.franek@envispot.cz

Work Experience

Lighting design / CEO ENVIsport a.s. (2008 - ongoing)
Lighting design Hormen CE a.s. – ES System CE a.s. (2004 - 2008)
Electrical engineer for data transmission Spectra Zbigniew Franek (2003 - 2004)

Education

VSB - Technical University of Ostrava, Department of Electrical Engineering and Computer Science (2000 - 2006)

Languages

Czech (mother tongue)
Polish (fluent)
English (fluent)

Personal Data

Born in Karvina / Czech Republic 1979



6.9 | Roman Krop / Key Account Manager

Headquarter Czech Republic

Havlíčkovo nábřeží 2728/38
702 00 Ostrava
Česká republika
Tel.: +420 595 172 657
fax: +420 595 172 658
Mobil: +420 739 682 017
E-Mail: roman.krop@envispot.cz

Work Experience

Account Manager ENVIsport a.s. (2012 - present)
Business Manager Enviropol PL (2012 - 2013)
Account Manager Ekonomika a daně s.r.o. (2009 - 2012)
Laja, Owner (2005 - 2011)

Education

Certified training in management skills (2006 - 2007)
Palacky University in Olomouc, Department of Chinese and Polish (2003 - 2004)

Languages

Czech (fluent)
Polish (mother tongue)
English (fluent)

Personal Data

Born in the Czech Republic in 1984



6.10 | Jaroslav Šnobl / Engineering

Headquarter Czech Republic

Havlíčkovo nábřeží 2728/38
702 00 Ostrava
Česká republika
Tel.: +420 595 172 657
fax: +420 595 172 658
Mobil: +420 739 682 018
E-Mail: jaroslav.snobl@envispot.cz

Work Experience

Lighting design / ENVIsport a.s. (2013 - present)
Lighting design / CSO - Czech Society for Illumination (2007 - 2013)
Technik passportization VO, VO projection / PTD Muchová, s.r.o. (2007 - 2008)

Education

VSB - Technical University of Ostrava, Department of Electrical Engineering and Computer Science (2003 - 2009)

Languages

Czech (mother tongue)
English (fluent)

Personal Data

Born in Olomouc / Czech Republic in 1983



6.11 | Jan Zálešák / Engineering

Headquarter Czech Republic

nám. 14. října 1307/2
150 00 Praha 5
Česká republika
Tel.: +420 244 404 569
fax: +420 244 461 906
Mobil: +420 739 682 019
E-Mail: jan.zalesak@envispot.cz

Work Experience

Lighting design ENVIsport a.s. (2010 - present)

Education

VŠB - TU Ostrava, Faculty of FEI, Department of Electrical Power Engineering
(2006 - 2011)

Languages

Czech (mother tongue)
English (fluent)

Personal Data

Born in the Czech Republic in 1986

7 | Lighting Design in Detail

The following pages will present a brief overview regarding the range of professional services available for clients and which can be provided by LDA on a one-to-one basis to service individual project requirements.

No project is too small and no project is too large.

The specific scope/ program/ cost/ and control will be developed individually for each and every project. Project services will be agreed on day one at initial briefing stage and further developed in full detail at detailed briefing stage.

7.1 | Daylighting

Our concepts include the following steps:

- ✓ Preliminary Design of daylighting systems, in coordination with the architect and client
- ✓ Basic data input to facade designers
- ✓ Coordination with interior architects
- ✓ Cost estimate of systems developed
- ✓ Daylight factoring in relation to the premises and to determine the needs of the artificial light
- ✓ Lighting levels calculated for different areas
- ✓ Development of sun-path diagrams in relation to the different orientations of the facades and the building areas, as well as basic data input for adjacent disciplines (sun radiation, heat input, time frames, power input through sun radiation)
- ✓ Concept as reported will include describing possible shading and/or daylight control systems



Detailed information:

- ✓ Final Report
- ✓ Drawings in AutoCAD and PDF
- ✓ Approximate weight of the daylight systems will be used as input to structural and facade design work, as carried-out by the project consultants
- ✓ Information about maintenance (O&M manuals) of the selected daylight and/or sun-shading system

Our daylight-design includes a feasibility study to the extent how and if the project may benefit from sun-protection systems and/or daylight guiding systems.

Phase one includes the feasibility study about possibilities to implement daylight-shading- or daylight-guidance systems on the project, starting from the building and its characteristics. In coordination with the client and / or architect from the different solutions, the preferred one will be selected and detailed.

Phase two will include the development of the system up to detail design stage. Based on the approved detail design, the data is then implemented into the tender

Third phase includes the technical review of offered systems including award proposal, limited supervision and support of the architect and/or client during construction period and part of this work is the hand-over procedure including snagging list.



7.2 | Artificial Lighting Design

Preliminary or Concept Design

Provision for lighting parameters (level of illumination, illuminance levels, glare factors, CRI, etc.), depending on the required values and norms are to be determined.

The illumination intensity will be determined starting from the analysis of the surfaces of the rooms. Developments of possible lighting systems and their influence on the architecture and the energy consumption will be proposed. Results are given as a report including drawings, data sheets and lighting calculations.

Detail Design

Based on the approved preliminary design, the lighting systems are going to be detailed and further developed incorporating necessary changes to finalise the stage with a detail design report ready for hand-over to the client.

Detail Design includes following work:

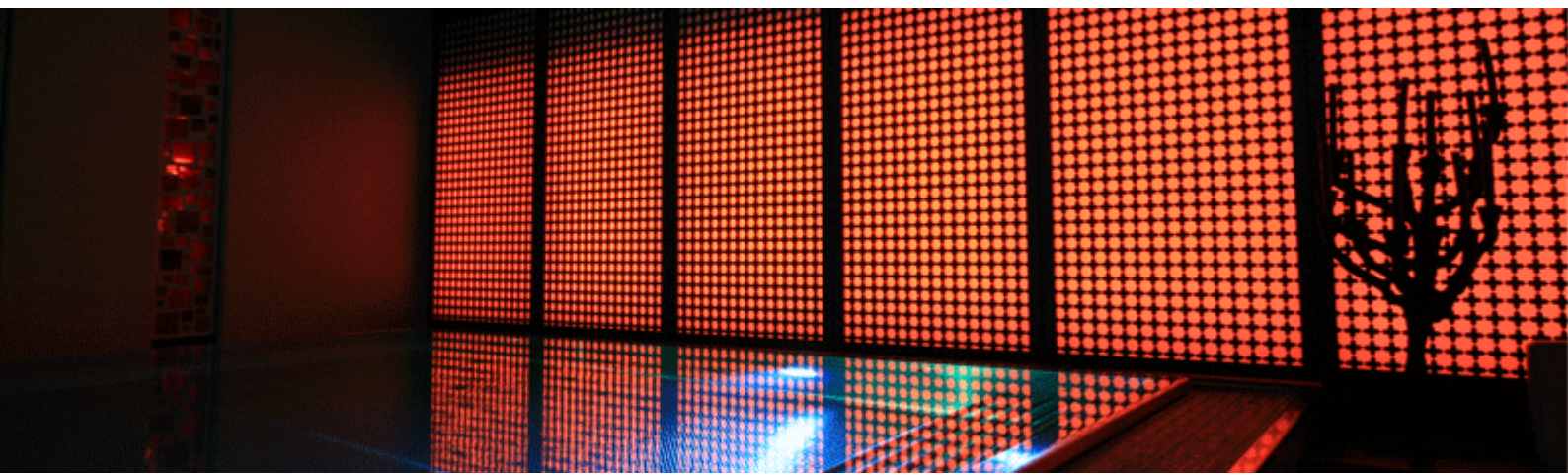
- ✓ Detailed calculations of the selected lighting systems
- ✓ Detailed drawings, including locations, installation details as necessary
- ✓ Switching and/or dimming circuits and proposal about control equipment to be used

Environmental studies

As a part of this work, the entire spectrum of visual perception will be carefully considered to be able to design the best mix of daylight and artificial light. In special cases we are able to build models on a scale of 1:10 or 1:5, to give the client and/or architect the possibility of accurate information better than the conventional light visualization programs could provide.

Preparation of tender documents

Detailed description of the lighting systems are the basic input to the tender, including all required parameters such as dimensions, lighting parameters, materials, etc.



Design works performed by LDA include the following information:

- ✓ Energy consumption of the areas designed
- ✓ Selection of colours of light and their placement in coordination with rooms and functions
- ✓ Number of luminaires
- ✓ Information about the control and / or dimming system
- ✓ Design input to BMS systems about switching and / or dimming circuits
- ✓ Budget for approved lighting systems

Basically we are working based on the design-fee guidelines for consultants in Austria. For each project the proposed package, to meet the needs of client and / or architect, technical and commercial parameters, are to be agreed and finally negotiated.

Assistance in selection of the executing / delivering company

- ✓ Review of the incoming bids of vendors in terms of technical and commercial accuracy and in compliance with the tender documentation
- ✓ Award proposal
- ✓ Support during awarding and/or negotiation meetings with potential contractors

Construction supervision and handover

- ✓ Partial presence, as necessary, during time of installation of lighting systems
- ✓ Testing of implemented systems in terms of design and contract compliance
- ✓ Measurements of achieved lighting values in terms of lighting design and calculated / proposed values
- ✓ Hand-over report including snagging list and time frames for completion



Special know-how of LDA for your project

In our lighting laboratory, we are able to perform mock-up assemblies of different lighting solutions, model testing and measurements of system as part of our design work.

Our quick and competent answers and/or elaborations will help clients in saving time and money.

In times of increasing costs in all fields, we are able to develop standard systems further and as such to propose quick and cost-efficient systems. Those will satisfy the higher demands and they are much more affordable than total new development systems.

Example: Florido Tower Vienna

Reduction of light fixtures from about 6,000 down to about 3,000 by carefully selecting a very efficient moderately adapted system, as a result of this small exchange, large savings in terms of construction budget, maintenance and energy consumption are achieved.

Many of LDA's newly developed lighting systems are now part of standard range of different lighting manufacturers and they have been used in countless projects worldwide.

8 | Our Services - Your Added Value

8.1 | Artificial Lighting Design

Individual development of lighting systems, to help protecting the environment, the results will match accurately the requirements, therefore, our projects operate at the lowest possible energy consumption and maintenance costs.

8.2 | "Value Engineering" Optimization of Existing Designs and/or Completed Projects

Due to the increasing demand of cost-efficient projects, so-called "value engineering" becomes for many customers increasingly important. Appropriate improvements include the savings in investment-maintenance and energy costs. The cost reductions found in the lighting sector are resulting in savings by electrical installations, energy consumption, ventilation and cooling systems consumption of the building.

8.3 | Event and Stage Lighting

Based on our leader-ship role in film-, ballet-, theatre and opera productions, we are able to provide the customer with a comprehensive knowledge of stage lighting and / or lighting for banquet halls and conference centres. This allows us to design lighting solutions those provide maximum on flexibility at minimum of cost.



8.4 | Outdoor and/or Effect Lighting

Based on our experience of more than 30 years in lighting design and the use of state of art techniques, we are able to design the optimum solution for each kind of project. Our innovative design approaches result in a special "landmark design". Along with the creative design development, we pay particular attention to the "day look" of the building, the planned systems should be "invisible" and the accessibility of lights in terms of maintenance must be achieved.

8.5 | Efficiency Studies

Due to the large number of new systems (LED), which are constantly arriving on the market, it is often necessary to develop accurate cost-benefit analysis including all technical-, commercial- and lighting parameters. We are happy to assist in providing such analysis for you.

8.6 | Lecturing

LDA supplies know-how in lighting design topics through seminars and events as well as in lectures and presentations. Based on our professional -critical- and independent view, the information provided by LDA is highly appreciated by the participants.

9 | Selected Reference Projects

Intercontinental Hotel / Warsaw, Poland
Hilton Hotel / Jeddah, KSA
Federation Tower / Moscow, Russia
Commercial Bank / Abu Dhabi, UAE
Injazat Data Centre / Abu Dhabi, UAE
Vienna North Railway station / Vienna, Austria
Downtown of Waidhofen an der Ybbs / Austria
House of Industry – Façade Lighting / Vienna, Austria
QMA Damien Hirst / Doha, Qatar
Kempinski Hotel / Vienna, Austria
Zurich Airport, Dock B / Switzerland
Generali Foundation Daylight Museum / Vienna, Austria
Business Research Centre / Warsaw, Poland
Dubai Airport, Terminal 3 / UAE
Refurbishment historic Concert Hall / Vienna, Austria
Museum City of Wels / Austria
Designhotel Andel's / Prague, CZ
Ringstraßengallerie / Vienna, Austria
National Bank Abu Dhabi / UAE
Papyrus Museum Vienna/Austria
National Austrian Library Vienna/ Austria
Prunkstiege Vienna/ Austria
Bneid Al Qar/ Kuwait
Hessa Al Mubarak/ Kuwait
Meraas Headquarters/ Dubai, UAE
The Scientific Center of Kuwait/ Kuwait
Aviation Boulevard/ Muscat, Oman
Golf Place/ Dubai, UAE
Doha Competition/ Doha, Qatar
DMA/ADM – Sustainable Lighting Handbook, Abu Dhabi / UAE

9.1 | Intercontinental Hotel / Warsaw, Poland

Left & Right:
exterior views

Client: *Porr AG*
Feasibility study
for outdoor lighting

Location: *Warsaw, Poland*
Height: *160m*
Year: *2001 - 2003*



9.2 | Hilton Hotel / Jeddah, KSA

Left Above and Left Below:
Exterior view

Right:
Exterior view / Façade Lighting

Client: *SAS Salem
Agencies&Services Corp.*
Outdoor Lighting Design,
Façade Lighting Design
Location: *Jeddah, Saudi Arabia*
Year: *2002 - 2005*



9.3 | Federation Tower / Moscow, Russia

Left:
Scale model

Right:
Computer rendering

Client: *Mirax / Moscow*

**Concept design of
façade lighting**

Location: *Moscow, Russia*

Height: *487m*

Year: *2006*

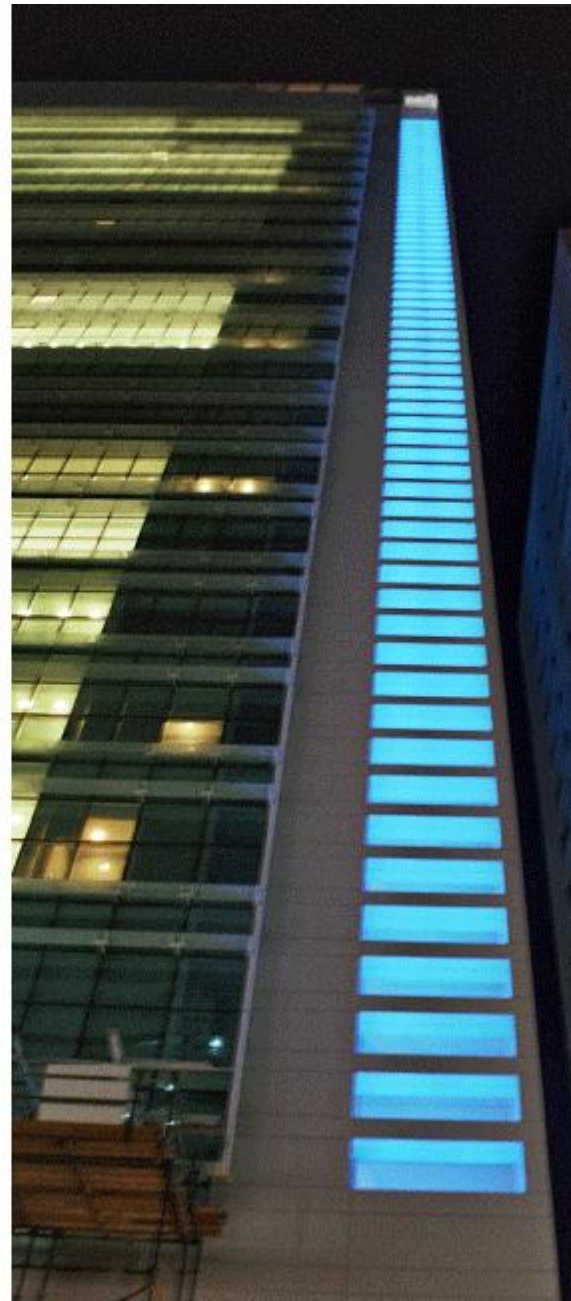


9.4 | Commercial Bank / Abu Dhabi, UAE

Left and Right:
Exterior views

Client: *AP.G / Abu Dhabi*
External Flood Lighting &
Celebration Lighting,
Entrance Design

Location: *Abu Dhabi, UAE*
Year: 2005 - 2006



9.5 | Injazat Data Centre / Abu Dhabi, UAE

Above :
Exterior view / Entrance

Below:
Exterior view

Client: *Züblin*
Façade Lighting Design
Location: *Abu Dhabi, UAE*
Year: 2007 - 2008

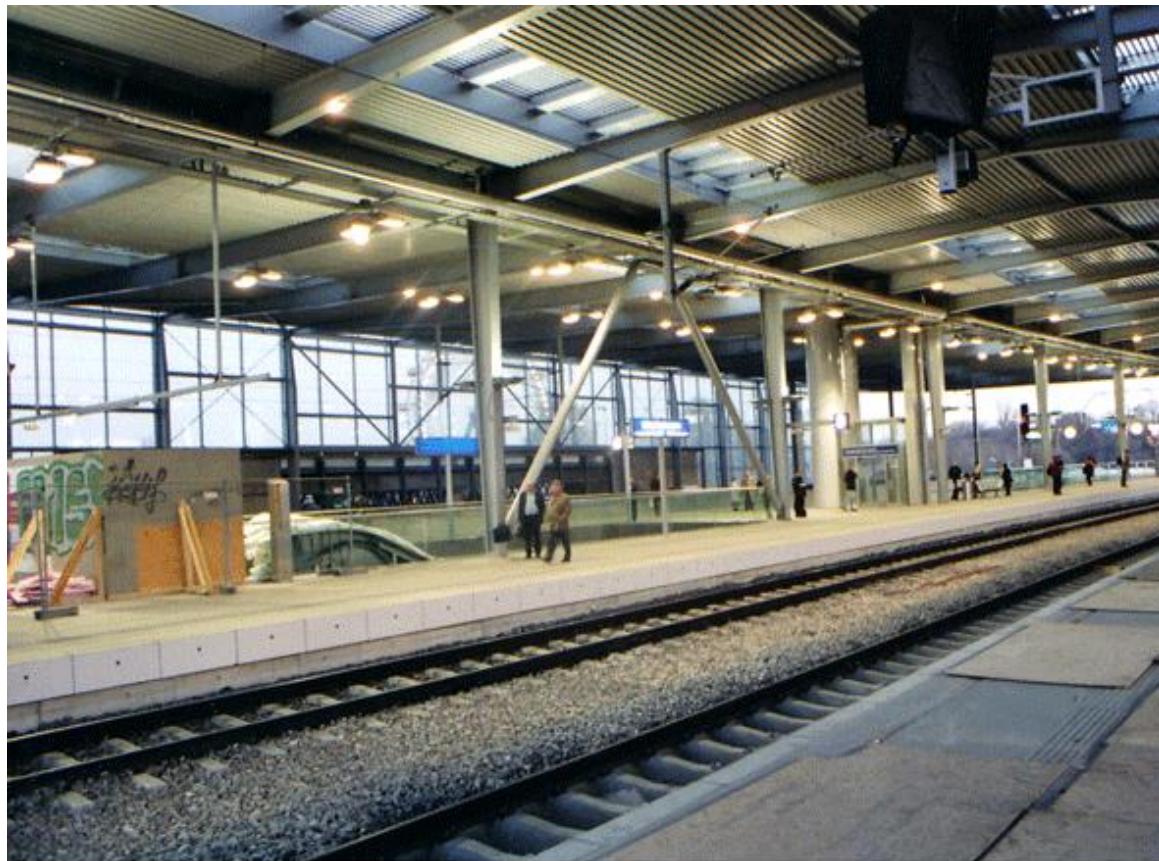


9.6 | Vienna North Railway Station / Vienna, Austria

Above:
Train station platforms lighting

Below:
Main façade lighting

Client: ÖBB
Interior Lighting and
Façade Lighting Design
Location: Vienna, Austria
Year: 2006 - 2008



9.7 | Downtown of Waidhofen an der Ybbs / Austria

Above and Below:
Street lighting views

Client: *Architect Beneder
Landscape &
City Lighting Design*
Location: *Waidhofen, Ybbs,
Austria*
Year: *2000 - 2001*



9.8 | House of Industry – façade lighting / Vienna, Austria

Above and Below:
Exterior views / Façade lighting

Client: *Schöffauer Architects*
Electrical & Artificial
Lighting Design
Location: *Vienna, Austria*
Year: *2005*



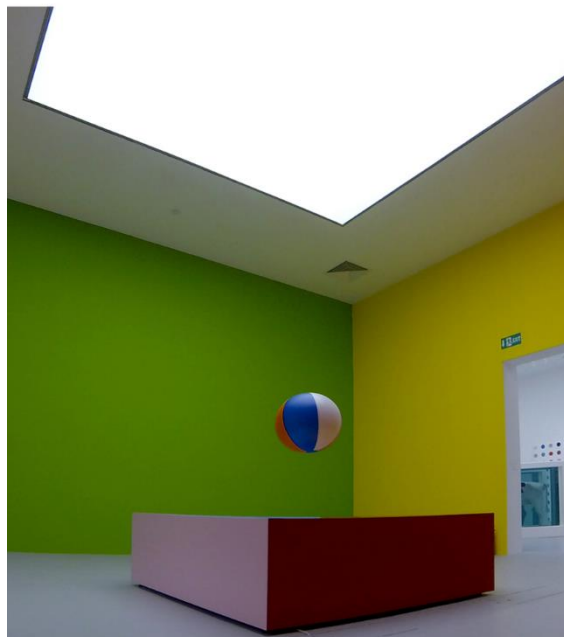
9.9 | OMA Damien Hirst / Doha, Qatar

Above Left:
Damien Hirst
"Horror at Home"
1995
Spin Paintings
1996

Below Left:
Damien Hirst
"Loving
in a World of Desire"
1996

Right:
Damien Hirst
"The Acquired
Inability to Escape"
1991
"Because I Can't Have You
I Want You"
1991

Client:
Qatar Museums Authority
**Lighting design
for all exhibition areas**
Location: *Doha, Qatar*
Year: *2013-2014*



9.10 | Kempinski Hotel – Vienna / Austria

Above Left:
Accent lighting

Above Right:
Bathroom lighting

Below:
Master Bedroom

Client:
Porr Solution
Lighting design
for all interior and exterior areas
Location: *Vienna, Austria*
Year: *2009 - 2013*



9.10 | Kempinski Hotel – Vienna / Austria

Above:
Lobby

Below:
Fine Dining

Client:
Porr Solution
Lighting design
for all interior and exterior areas
Location: *Vienna, Austria*
Year: *2009 - 2013*

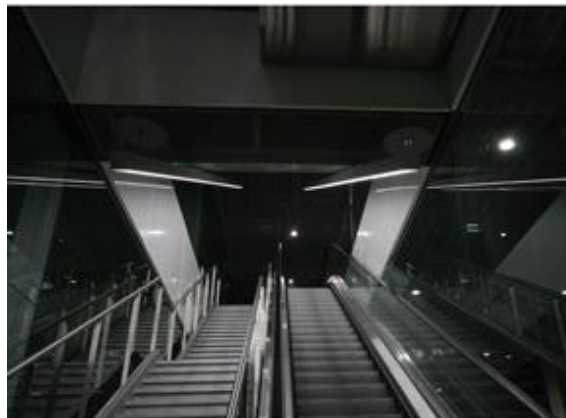


9.11 | Zurich Airport, Dock B / Switzerland

Left Above:
Exterior view



Left Middle:
Escalator lighting



Left Below:
Waiting area



Right:
Staircase lighting



Client: *Burkhardt & Partner AG*
Zurich

Arrival & Departure Hall
Artificial & Outdoor
Lighting Design

Location: *Zurich / Switzerland*
Year: *2008 - 2011*

9.12 | Generali Foundation Daylight Museum / Vienna, Austria

Above:
Shading system

Below:
Interior view

Client:
Schönfeld, Jabornegg & Palffy
Artificial Lighting Design
Environmental Consulting
Location: *Vienna, Austria*
Year: 1993 - 1994



9.13 | La Ville / Dubai, UAE

Above and Below:
Exterior views

Client: *Woods Bagot*
Public Realm Lighting Design
Location: *Dubai, UAE*
Year: *2013-2016*



9.14 | Dubai Airport, Terminal 3 / UAE

Left , Right Above,
Right Middle, Right Below:
Interior views

Client: *Dubai Civil Aviation*
Design of General Lighting
for all Public Spaces and
Effect Lighting Design
for all Public Spaces
at Departure Gates
Location: *Dubai,
United Arab Emirates*
Year: *2007 - 2008*



9.15 | Refurbishment historic Concert Hall / Vienna, Austria

Above:
Exterior view / Main façade

Below:
Interior view

Client: *Prof. Puchhammer*
Artificial Lighting Design
Restauration, Optimization
Location: *Vienna, Austria*
Year: *1996-2000*



9.16 | Museum City of Wels / Austria

Above Left:
Interior view / Entrance area

Above Right, Below:
Interior views / Exhibition areas

Client: *Grünberger*
Artificial Lighting Design
Environmental Design
Location: *Wels, Austria*
Year: 2002



9.17 | Designhotel Andel's / Prague, CZ

Above:
Interior view / Reception area

Below:
Interior view / Bar area

Client: *UBM Bohemia*
Artificial Lighting Design,
Outdoor Lighting,
Façade Lighting Design
Location: *Prague, Czech Republic*
Year: *2001 - 2002*



9.18 | Ringstraßengallerie / Vienna, Austria

Interior view

Client:
Zürich Kosmos Insurance Co.
Artificial Lighting Design Concept
Location: *Vienna, Austria*
Year: *2003 - 2004*



9.19 | National Bank Abu Dhabi / UAE

Left & Right:
Exterior views

Client:
APG International / Abu Dhabi
External Flood Lighting &
Celebration Lighting
Location: *Abu Dhabi /*
United Arab Emirates
Height: *225m*
Year: *2001 - 2003*



9.20 | Papyrus Museum/ Vienna, Austria

Interior View

Client:

BWM Architects

Interior Lighting Design

Location: *Vienna / Austria*

Year: *2021*



9.21 | Austrian National Library/ Vienna, Austria

Interior View

Client:

HTB-Plan

Interior Lighting Design

Location: *Vienna/ Austria*

Year: *2019-2021*



9.22 | Prunkstiege/ Vienna, Austria

Above:
Upper stair Interior View

Below:
Atrium Interior View

Client:
Austrian National Library
Interior Lighting Design
Location: *Vienna/ Austria*
Year: *2020-2021*



9.23 | Bneid Al Oar/ Kuwait

Above:
Façade Lighting Rendering

Below:
Interior Atrium Rendering

Client:
PACE
Interior, Façade, & Landscape
Lighting Design
Location: *Kuwait*
Year: *2019-2020*



9.24 | Hessa Al Mubarak/ Kuwait

Exterior Lighting Rendering

Client:
PACE

Interior, Façade, & Landscape
Lighting Design
Location: *Kuwait*
Year: *2019- inprogress*



9.25 | Meraas Headquarters/Dubai, UAE

Above:
Exterior Façade Rendering

Below:
Interior Lighting Rendering

Client:
Dewan Architects
Interior, Façade, & Landscape
Lighting Design
Location: *Dubai/ UAE*



9.26 | The Scientific Center of Kuwait/Kuwait

Exterior Façade Lighting Rendering

Client:
PACE

Interior & Façade Lighting Design
Location: *Kuwait*
Year: *2020- inprogress*



9.27 | Aviation Boulevard/ Muscat, Oman

Landscape Lighting Rendering

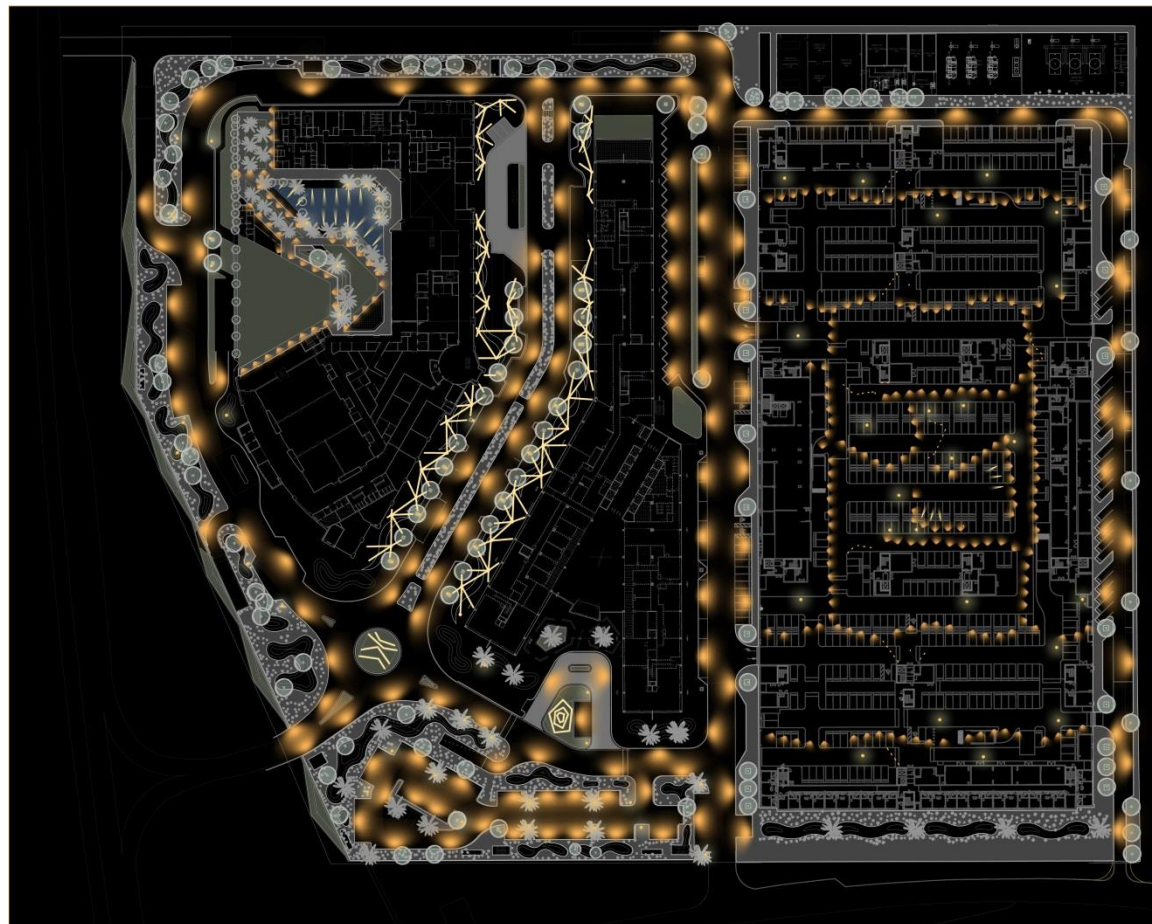
Client:

Atkins Oman

Interior, Façade, & Landscape
Lighting Design

Location: *Muscat/Oman*

Year: *2019- inprogress*



9.28 | Golf Place/ Dubai, UAE

Exterior Façade Lighting Rendering

Client:

Dewan Architects

Interior and Façade VE and Design
Enhancements

Location: *Dubai/*

United Arab Emirates

Year: *2021- inprogress*

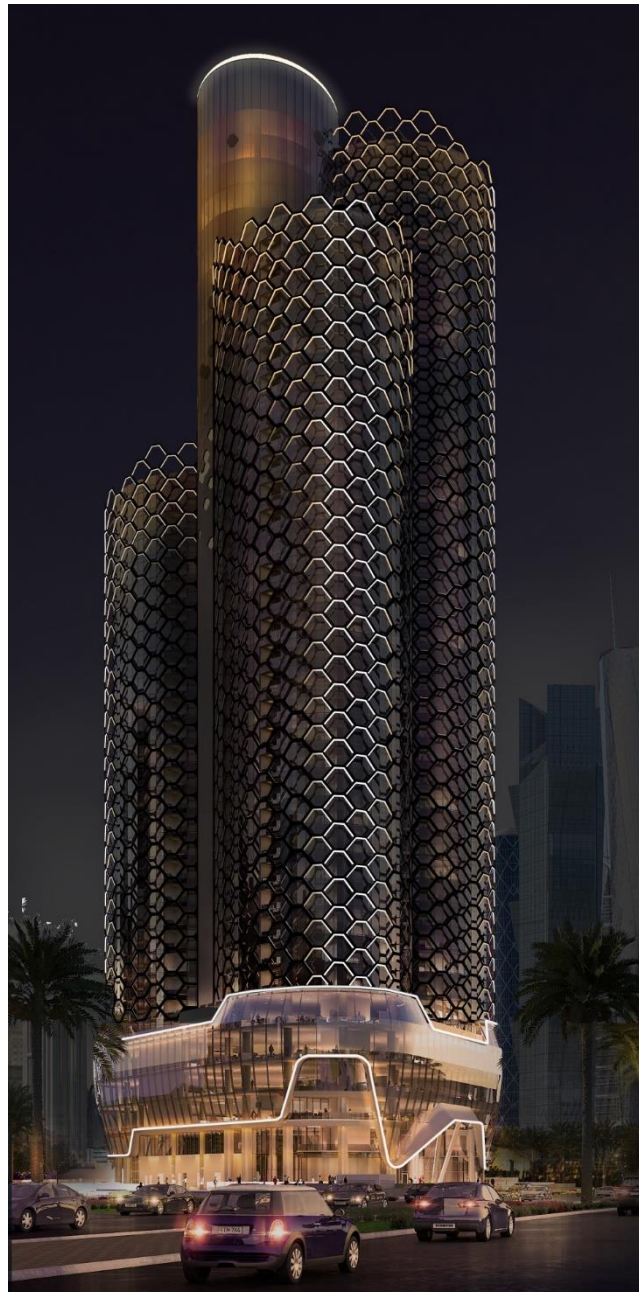


9.29 | Doha Competition/ Doha, Qatar

Exterior Façade Lighting Rendering

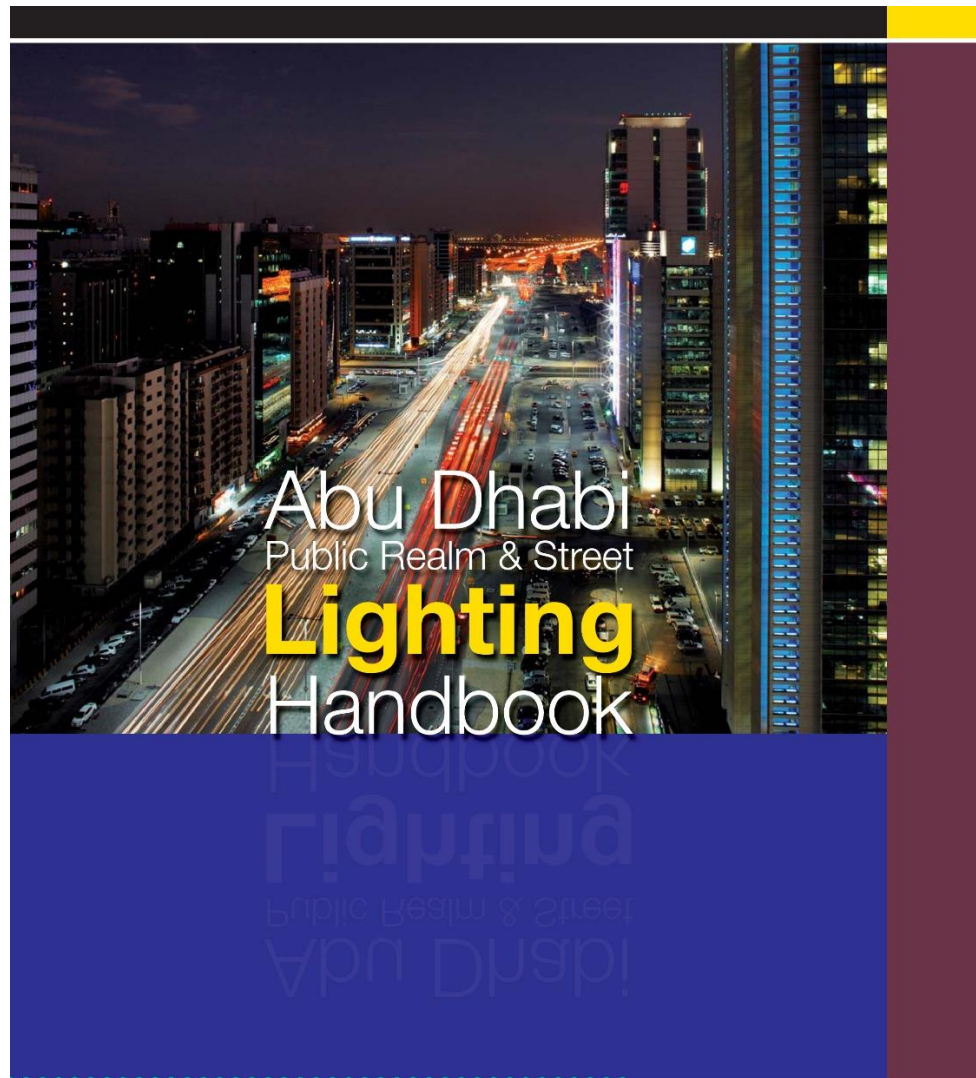
Client:
BIMC

Façade Lighting Competition
Location: *Doha/Qatar*
Year: *2020*



9.30 | DMA/ADM – Sustainable Lighting Handbook

Client:
*Department of Municipality Affairs
& Abu Dhabi Municipality*
Sustainable Lighting
Handbook/Code
Location: *Abu Dhabi/
United Arab Emirates*



DEPARTMENT OF MUNICIPAL AFFAIRS
بلدية الشؤون البلدية
بلدية المنطقة الغربية
بلدية مدينة العين
بلدية مدينة أبوظبي
WESTERN REGION MUNICIPALITY
AL AIN CITY MUNICIPALITY
ABU DHABI CITY MUNICIPALITY

بلدية مدينة أبوظبي
ABU DHABI CITY MUNICIPALITY
DEPARTMENT OF MUNICIPAL AFFAIRS

9.31 | Intercontinental Hotel RAK

Client:
Intercontinental Hotels Group
Façade, Landscape, & Interior
Lighting Design
Location: *Abu Dhabi /*
United Arab Emirates



10 | References

10.1 | Façade Lighting

2021-ongoing	Emaar Beachfront	Dubai/ UAE Interior, Façade, & Landscape Design Client: <i>RMJM</i>
2021-ongoing	Misk City	Riyadh/ SA Interior, Façade, & Landscape Design Client: <i>RMJM</i>
2020-2021	Three Schools for MoE	Kuwait Interior, Façade, & Landscape Design Client: <i>PACE</i>
2020-ongoing	The Scientific Center of Kuwait	Kuwait Interior & Façade Design Client: <i>PACE</i>
2019-2020	Bneid Al Qar	Kuwait Interior, Façade & Landscape Design Client: <i>PACE</i>
2019-ongoing	Hessa Al Mubarak	Kuwait Interior, Façade & Landscape Design Client: <i>PACE</i>
2018-ongoing	Riyadh Mall A17-11	Riyadh / SA Façade & Exterior Lighting Design Client: <i>Dewan Architects</i>
2019-ongoing	OAG Aviation Boulevard	Muscat / Oman Interior, Façade & Landscape Design Client: <i>Atkins Oman</i>

2019-ongoing	Intercontinental Hotel Muscat	Muscat / Oman Interior, Façade & Landscape Design Client: <i>Atkins Oman</i>
2019-ongoing	UTC School Cairo	Cairo / Egypt Façade & Landscape Design Client: <i>Dewan Architects</i>
2019-ongoing	Millennium Hotel	Riyadh / SA Interior, Façade & Landscape Design Client: <i>Dewan Architects</i>
2018-ongoing	Marriott RAK	Ra's al-Khaima/ UAE Interior, Façade & Landscape Design Client: <i>Meinhardt Group</i>
2018-2019	ADNOC HQ Campus	Abu Dhabi / UAE Façade & Landscape Design Client: <i>Adnoc</i>
2017-2018	H09 Al Mouj Rayhaan Hotel	Bushar / Oman Façade Lighting Peer Review & New Design Client: <i>Attkins Oman</i>
2017-2018	Dubai Water Canal D16-58	Dubai / UAE Façade, Public Areas, Apartments & Landscape Lighting Design Client: <i>Dewan Architects</i>
2017-2019	ME DO RE Tower	Abu Dhabi / UAE Façade Lighting Design Client: <i>APG Architects</i>
2017-2018	Tecom Office Building D17-10	Dubai / UAE Public Area & Façade Lighting Client: <i>Dewan Architects</i>
2017-2018	16003 Residential Mid-rise JVC	Dubai / UAE Façade, Public & Landscape Lighting Design Client: <i>Taraf Properties</i>
2017-on hold	Dubai Healthcare City DHCC D16-41	Dubai / UAE Façade, Public & Landscape Lighting Design Client: <i>NSHMI</i>
2016-2018	Dubai Creek Harbour Residential	Dubai / UAE Façade, Interior & Landscape Lighting Client: <i>Dewan Architects</i>
2016-2022	Intercont RAK	Ra's al-Khaima / UAE Façade & Landscape Lighting for Re-Design of Resort Client: <i>P&T Architects</i>
2016-on hold	Kings Walk Mall	Dubai / UAE Façade & Landscape Lighting Client: <i>Dewan Architects / Assaudia</i>

2016-2017	JBH Car Park	Dubai / UAE Concept for Façade and Landscape Lighting, inc. Tennis Courts Client: <i>CVTec Engineers</i>
2016-2018	Hampton by Hilton	Dubai / UAE Internal, Façade & Landscape Lighting Client: <i>Al Wasl</i>
2016-2017	PO43 Residential Building	Dubai / UAE Internal, Façade & Landscape Lighting Client : <i>CVTec Engineers</i>
2016	Car Park Design Center	Dubai / UAE Façade Lighting Design Client: <i>Wasl LLC</i>
2016	Meraas Headquarters	Dubai / UAE Internal, Façade & Landscape Lighting Client: <i>Dewan Architects</i>
2015-2017	Tarabichi Medical Center	Dubai / UAE Internal, Façade & Landscape Lighting Client: <i>CVTec Engineers</i>
2015-on hold	EMPower Headquarters	Dubai / UAE Internal, Façade & Landscape Lighting Client: <i>P&T Architects and Engineers Ltd.</i>
2015-2017	Apartment Building	Dubai / UAE Internal, Façade & Landscape Lighting Client: <i>Dewan Architects</i>
2015-2016	Sherena Building	Dubai / UAE Internal, Façade & Landscape Lighting Client : <i>CVTec Engineers</i>
2015-2016	Hadovka Office Building	Prague / Czech Republic Façade Lighting Client : <i>Owner</i>
2015	Ritz Carlton	Doha / Qatar Façade Lighting Design Concept Client : <i>Ritz Carlton</i>
2015-2016	Jumeirah Car Park	Dubai / UAE Façade, Landscape Lighting – Concept Client: <i>Confidential</i>
2014-ongoing	Waldorf Astoria Doha	Doha / Qatar Hotel Interior & Façade Lighting Design Client: <i>Confidential</i>

2014-ongoing	P&T Saraya Jordanien	Jordan Interior, Exterior, Façade, Landscape and Street Lighting Design of Hotels, Conference Center & Office Buildings Client: <i>P&T Architects</i>
2014-2016	Bourdillon Tower	Lagos / Nigeria Internal, Façade & Landscape Lighting Client : <i>P&T Architects</i>
2014-2015	Al Habib Office Building COWI	Oman Interior, Exterior, Façade & Landscape Lighting Client : <i>COWI</i>
2014	Al Waseel Hotel Riyadh KSA	Saudi Arabia Concept Façade Lighting Client : <i>Al Raseel Properties Co.</i>
2014-2015	P&T North Gate KSA	Riyadh / Saudi Arabia Hotel & Private Residences Interior, Exterior, Façade and Landscape Lighting Design Client : <i>P&T Architects</i>
2014-2015	Salmgasse 6 Warimpex	Vienna / Austria Interior, Exterior, Façade & Landscape Lighting Design- historical environment Client : <i>Private Client</i>
2013-2014	Al Aziz Mosque AP.G	Abu Dhabi / UAE Façade Lighting Client : <i>AP.G Architets</i>
2013-2016	La Ville Hotel Dubai	Dubai / UAE Hotel Interior, Exterior, Façade & Landscape Lighting Design Client : <i>Woods Bagot Architects</i>
2013	IU-NBB Bahrain (National Bank Bahrain)	Bahrain Mock-up and Concept for Façade Lighting on existing Building Client : <i>Innovations Unlimited ME</i>
2013	Meydan	Dubai / UAE Various Facade, Feature & Landscape Lighting Design Concepts Client: <i>Meydan</i>
2013 - 2014	RKP TAC Hartberg	Hartberg / Austria External, Façade & Landscape & Street Lighting Design Client: <i>Private</i>
2017 - 2017	Hampton by Hilton	Dubai / UAE Interior, Façade & Landscape Lighting Design Client: <i>Al Wasl</i>

2012	Mudar Marriott – Bloom Central	Abu Dhabi / UAE Façade and External Lighting Design Client: <i>Heberger Engineering Group</i>
2012	Doha Katara	Doha / Quatar Landscape & Façade Lighting Design, Value Engineering, Concept Design; Client: <i>Katara Management</i>
2011	Aabar Tower Height : 140m	Abu Dhabi / UAE Concept Design Client : <i>AP.G Architects</i>
2010 - 2015	Kish Twin Tower Height : 85m	Kish Island / Iran External and Internal Lighting Design Client : <i>Anboohsazane Homaye Tehran</i>
2010 - 2014	Bloom Central Marriott Height : 111m	Abu Dhabi / UAE Façade Lighting Design Client : <i>Heberger Engineering</i>
2010 - 2013	Azar Enerji Height : 134m	Baku / Azerbaijan Façade Lighting Design Client : <i>PT Architects</i>
2009 - 2013	Adnec Capital Center Height : 92m	Abu Dhabi / UAE Façade Lighting Design Client : <i>ADCB / AP.G Architects</i>
2010	Mangrove Place	Abu Dhabi / UAE Façade Lighting Design Client: <i>UPA Urbanism Planning Architecture</i>
2009 - 2010	JW Marriott	Baku / Azerbaijan Interior & Façade Lighting Design Client: <i>Strabag Bauholding</i>
2009 - 2013	Kempinski Hotel	Vienna / Austria Façade Lighting Design - Concept Client: <i>Porr Solution</i>
2009 - 2010	Abdullah Fahad Al Ajlan Tower	Riyadh/ Saudi Arabia Façade Lighting Design Client : <i>WS Atkins & Partners Overseas</i>
2009 - 2011	Hilton Hotel	Visegrad / Hungary Value Engineering & Re-Design of all parts of the hotel - internal & external Client: <i>Tourist Projects</i>
2008 - 2009	Dream Harbour Tower	Dubai / United Arab Emirates Façade Lighting Design & Artificial Lighting Design for all Public Spaces Client : <i>Desert Dream Real Estate & Inv. LLC</i>

2008 - 2009	Tauern SPA	Kaprun / Austria Artificial & Outdoor & Façade Lightng Design Client : <i>VAMED</i>
2008 - 2009	Hard Rock Hotel	Dubai / United Arab Emirates Façade Lighting Design & Electrical Engineering Design (Concept&Detail Design) Client: <i>WS Atkins & Partners Overseas</i>
2007 - 2008	Outletcenter Roses	Sv. Kriz / Croatia Façade Lighting Design Client : <i>Kiekenap Architects / Vienna</i>
2007 - 2008	Injazat Data Centre	Abu Dhabi / United Arab Emirates Façade Lighting Design Client : <i>Züblin</i>
2007 - 2008	Polus Shopping Centre	Constanta / Romania Façade Lighting Design Client : <i>TriGranit</i>
2007 - 2008	Polus Shopping Centre	Cluj-Napoca / Romania Façade Lighting Design Client : <i>TriGranit</i>
2007 - 2008	Vltavska Bubenska	Prague / Czech Republic Façade Lighting Design Client : <i>ORCO Property Group</i>
2007	H.H.Sheikh Salama Mosque	Al Ain / UAE External Façade Lighting Design Client : <i>AP.G Abu Dhabi</i>
2007	Mormon Church	Kiev / Ukraine External Façade Lighting Design Client : <i>Strabag</i>
2007	Khalidiya Tower	Abu Dhabi / United Arab Emirates Façade Lighting Design Client : <i>DEWAN Architects / Abu Dhabi</i>
2006-2007	Dusit Hotel	Abu Dhabi / United Arab Emirates Public Space & Façade Lighting Design Client : <i>Al Bayaty Architects</i>
2006	Hotel Mansion + Casino	St. Petersburg / Russia Interior & Façade Lighting Design Client : <i>VA TECH</i>
2006	Federation Tower	Moscow / Russia Concept Design of External Façade Lighting Client : <i>Mirax</i>
2005 - 2007	Palladium Shopping Centre	Prague / Czech Republic Façade Lighting Design Client : <i>EZ Praha / VA TECH</i>

2005 - 2006	Silesia City Centre	Katowice / Poland Façade Lighting Design Client: <i>Strabag Bauholding AG</i>
2004 - 2005	Korunní Dvůr Residential Block	Prague / Czech Republic Façade Lighting Design Client: <i>Strabag CZ</i>
2005 - 2006	Commercial Bank of Abu Dhabi	Abu Dhabi / United Arab Emirates Façade Lighting Design Client: <i>Turner International</i>
2004-2005	Chang Zhou Headquarters	Shanghai / China Artificial Lighting Design & Faade Lighting Design Client : <i>Chang Zhou Eletrical Department</i>
2004 - 2005	Chang Zhou Electricity Tower	ChangZhou / China Façade Lighting Design Client : <i>TianYU ISI Co. LTD</i>
2003 - 2004	Ringstrassen Gallerie Shopping Centre	Vienna / Austria Façade Lighting Design Client : <i>Erste Wiener Hotel AG</i>
2003 - 2005	Royal Palace Hotel	Jeddah / Saudi Arabia Façade Lighting Design Client : <i>SAS Salem Agencies&Services Corp.</i>
2002 - 2003	Department Store STEFFL	Vienna / Austria Façade Lighting Design / Concept Client : <i>Palmers AG</i>
2002 - 2004	STRABAG Bauholding AG - HQ	Vienna / Austria Façade Lighting Design Client : <i>STRABAG Bauholding AG</i>
2002 - 2005	Hotel Hilton	Jeddah / Saudi Arabia Façade Lighting Design Client : <i>SAS Salem Agencies&Services Corp.</i>
2002 - 2005	Marina Mall Shopping Centre	Abu Dhabi / United Arab Emirates Façade Lighting Design Client : <i>ACG Architects Abu Dhabi</i>
2002 - 2003	ZPA Jinonice Offices, Shopping Centre	Jinonice / Czech Republic Façade Lighting Design Client : <i>Aukett Europe / UK</i>
2002 - 2003	Flora Plaza Offices, Shopping Centre, Multiplex Cinema	Prague / Czech Republic Façade Lighting Design Client : <i>Africa Israel Investment</i>
2002 - 2003	Capricorn Tower	Dubai / United Arab Emirates Façade Lighting Design Client: <i>DCC / Dubai</i>

2001 - 2003	National Bank of Abu Dhabi New Headquarters	Abu Dhabi / United Arab Emirates Façade Lighting Design Client: <i>AP.G International / Abu Dhabi</i>
2002	French Lycee Public High School	Vienna / Austria Garden Lighting Design Client : <i>French Lycee Public High School</i>
2001 - 2002	Shopping Center Soravia	Bratislava / Slovakia Façade Lighting Design Client : <i>Soravia Bauträger</i>
2001 - 2002	Olympia Shopping Center	Teplice / Czech Republic Façade Lighting Design Client : <i>TriStannifer / CZ</i>
2001-2002	Andel's Hotel	Prague / Czech Republic Artificial & Outdoor & Façade Lighting Design Client : <i>UBM Bohemia</i>
2001 - 2002	Andel City Offices, Hotel, Multiplex	Prague / Czech Republic Façade Lighting Design Client : <i>UBM Bohemia</i>
2001 - 2003	Hotel Intercontinental	Warsaw / Poland Façade Lighting Design Client : <i>Porr AG</i>
2001	Strabag Bauholding AG - HQ	Vienna / Austria External Façade Lighting Design Client : <i>Strabag Bauholding</i>
2001	Olympia Shopping Center	Mlada Boleslav / Czech Republic Façade Lighting Design Client : <i>TriStannifer / CZ</i>
2001	Bedrovsky Dvur	Prague / Czech Republic Façade Lighting Design Client: <i>Skanska a.s.</i>
2000 - 2001	Florida Plaza	Vienna / Austria Façade Lighting Design Client : <i>Porr AG</i>
2000 - 2001	Urban Redevelopment	Waidhofen/Ybbs / Austria Façade Lighting Design Client: <i>Architect Beneder</i>
2000 - 2001	Velky Spalicek Shopping & Entertainment Center	Brno / Czech Republic Façade Lighting Design Client : <i>Porr AG</i>
1999 - 2001	AEZ - Stadtpark-Centre	Vienna / Austria Façade Lighting Design Client: <i>Porr AG</i>

1997 - 1998	Warsaw Financial Centre	Warsaw / Poland Façade Lighting Design Client: <i>Porr a.s.</i>
1994 - 1996	Cultural District	St.Poelten / Austria Façade Lighting Design Client: <i>Katzberger, Kada, Hollein</i>
1994 - 1996	Festspielhaus	St.Poelten / Austria Façade Lighting Design Client: <i>Architect K. Kada</i>

10.2 | High-rise Buildings

2017-2018	H09 Al Mouj Rayhaan Hotel	Bushar / Oman Façade Lighting Peer Review & New Design Client: <i>Attkins Oman</i>
2017-2019	ME DO RE Tower	Abu Dhabi / UAE Façade Lighting Design Client: <i>APG Architects</i>
2015-on hold	EMPower Headquarters	Dubai / UAE Internal, Façade & Landscape Lighting Client: <i>P&T Architects</i>
2015-ongoing	Mozoon Towers Hotels	Doha / Qatar Interior & Landscape Lighting Client: <i>MZP, SC Design, Francis Landscape</i>
2015	Ritz Carlton	Doha / Qatar Façade Lighting Design Concept Client: <i>Ritz Carlton</i>
2014-ongoing	Waldorf Astoria Doha	Doha / Qatar Hotel Interior & Façade Lighting Design Client: <i>Confidential</i>
2014-2016	Bourdillon Tower	Lagos / Nigeria Internal, Façade & Landscape Lighting Client: <i>P&T Architects</i>
2014-2015	Langham Hotel	Doha / Qatar Internal Lighting Client: <i>MDI Interior Design Dubai</i>

2014-2015	Polus Office Tower I+II Bratislava	Bratislava / Slovakia Interior and Office Lighting Design Client: <i>ATP Architekten Wien</i>
2013	IU-NBB Bahrain (National Bank Bahrain)	Bahrain Mock-up and Concept for Façade Lighting on existing building Client: <i>Innovations Unlimited ME</i>
2012-2017	Hampton by Hilton	Dubai / UAE Hotel Interior, Exterior, Façade & Landscape Lighting Design Client: <i>A/ Wasl</i>
2011	Donauturm Height : 252m	Vienna / Austria Internal Lighting Design Client : <i>Donauturm Betriebs GesmbH</i>
2011	Aabar Tower Height : 140m	Abu Dhabi / UAE Concept Design Client : <i>AP.G Architects</i>
2010 - 2015	Kish Twin Tower Height : 85m	Kish Island / Iran External and Internal Lighting Design Client : <i>Anboohsazane Homaye Tehran</i>
2010 - 2014	Bloom Central Marriott Height : 111m	Abu Dhabi / UAE Façade Lighting Design Client : <i>Heberger Engineering</i>
2010 - 2013	Azar Enerji Height : 134m	Baku / Azerbaijan Façade Lighting Design Client : <i>PT Architects</i>
2009 - 2013	Adnec Capital Center Height : 92m	Abu Dhabi / UAE Façade Lighting Design Client : <i>ADCB / AP.G Architects</i>
2009-2010	Abdullah Fahad Al Ajlan Tower	Riyadh/Saudi Arabia Façade Lighting Design Client : <i>WS Atkins & Partners Overseas</i>
2008-2009	Dream Harbour Tower Height : 220m	Dubai / United Arab Emirates Façade Lighting Design & Artificial Lighting Design for all Public Spaces Client : <i>Desert Dream Real Estate & Inv. LLC</i>
2008	Hard Rock Hotel Height : 378m	Dubai / United Arab Emirates Façade Lighting Design & Electrical Engineering Design (Concept&Detail Design) Client : <i>WS Atkins & Partners Overseas</i>
2008	Sky Office Tower Height : 120m	Duesseldorf / Germany Value Engineering & Re-Design Client : <i>ORCO Group / Germany</i>

2007	Mohammed Bin Zayed City Height : 100m	Abu Dhabi / United Arab Emirates Lighting Design of 20 Towers Complete Lighting Design internal&external Client : <i>Al Bayaty Architects / Abu Dhabi</i>
2007	Khalidiya Tower Height : 130m	Abu Dhabi / United Arab Emirates Façade Lighting Design Client : <i>DEWAN Architects / Abu Dhabi</i>
2006	Federation Tower Height : 487m	Moscow / Russia Concept Design of External Façade Lighting Client: <i>Mirax / Moscow</i>
2005 - 2006	Commercial Bank of Abu Dhabi Height : 170m	Abu Dhabi / United Arab Emirates External Flood Lighting & Celebration Lighting, public spaces artificial light Client: <i>Ap.G International / Abu Dhabi</i>
2004	Chang Zhou Electricity Tower	ChangZhou / China External Façade Lighting Design Client: <i>TianYU ISI Co. LTD</i>
2002 - 2003	Capricorn Tower Height : 225m	Dubai / United Arab Emirates External Flood Lighting & Celebration Lighting, public spaces artificial light Client : <i>DCC / Dubai</i>
2001 - 2003	National Bank of Abu Dhabi New Headquarters Height : 225m	Abu Dhabi / United Arab Emirates United Arab Emirates External Flood Lighting & Celebration Lighting Client: <i>AP.G International / Abu Dhabi</i>
2001 - 2002	City Tower Height : 90m	Vienna / Austria Daylight- and Artificial Lighting Design Client : <i>Porr AG</i>
2001 - 2003	Hotel Intercontinental Height : 160m	Warsaw / Poland Feasibility Study for Outdoor Lighting Client : <i>Porr AG</i>
2000-2001	Florido Office Tower	Vienna / Austria 50% cost saving in investment of the lighting budget & 40% energy optimization Client: <i>Porr AG</i>
2000 - 2001	Florido Plaza Height : 100m	Vienna / Austria Daylight - and Artificial Lighting Design Official Areas, Outdoor Lighting Design Client : <i>Porr AG</i>

1997 - 1998	Warsaw Financial Center Height : 140m	Warsaw / Poland Artificial Lighting Design and Consultation in the Lobby Area, Outdoor Lighting Client: <i>Porr a.s.</i>
1997 - 1998	BRC Warsaw Height : 100m	Warsaw / Poland Daylight Design for the Atrium Client: <i>Architect Thaddäus Spsychala</i>
1983 - 1986	Hongkong & Shanghai Banking Corporation Height : 140m	Hongkong / China Complete Daylight and Artificial Lighting Design, development of integrated lighting - ceiling systems, environmental design Client: <i>Sir Norman Foster / UK</i>
1981 - 1982	IBM - European Headquarters Height : 100m	Paris / France System developments for Office Lighting Client: <i>Architect Bertrand Bonnier / F</i>

10.3 | Office Buildings

2019-ongoing	Intercontinental Hotel Muscat	Muscat / Oman Interior, Façade, & Landscape Lighting Client: <i>Atkins Oman</i>
2018- ongoing	Baloise Park	Zürich / CH Interior Lighting Client: <i>Porr Suisse AG</i>
2018	GCB Berlin Office	Berlin / Germany Public Area Lighting Concept Client: <i>Frank Wolff</i>
2017-2018	Tecom Office Building D17-10	Dubai / UAE Public Area & Façade Lighting Client: <i>Dewan Architects</i>
2017	Plus Office Ontario Tower	Ontario / Canada Interior Lighting Design Client: <i>CVTec Engineers</i>
2016	CVTech Office	Dubai / UAE Internal Lighting – Refurbishment of CVTec HQ Client: <i>CVTech Engineers</i>
2016	Richemont Offices	Dubai / UAE Internal Lighting Design & Warehouse Calculations Client: <i>Richemont</i>
2016	Meraas HQ	Dubai / UAE Internal, Façade & Landscape Lighting Client: <i>Dewan Architects</i>
2015-2016	Hadovka Office Building	Prague / Czech Republic Façade Lighting Client: <i>Owner</i>

2015-on hold	EMPower Headquarters	Dubai / UAE Internal, Façade & Landscape Lighting Client: <i>P&T Architects</i>
2014-2015	Al Habib Office Building COW	Oman Interior, Exterior, Façade & Landscape Lighting Design Client: <i>COWI</i>
2014-2015	Polus Office Tower I&II Bratislava	Bratislava / Slovakia Interior and Office Lighting Design Client: <i>ATP Architekten Wien</i>
2013-on hold	Skolkovo Office Complex	Skolkovo / Russia Design Concept for Waterfeature at Office Park Development Client: <i>Berndorf Austria</i>
2013-2014	RKP TAC Hartberg	Hartberg / Germany Façade, External, Landscape and Street Lighting Design Client: <i>Private Client</i>
2008	Sky Office Tower	Duesseldorf / Germany Value Engineering & Re-Design Client : <i>ORCO Group / Germany</i>
2007 - 2008	Shell Gas Plant - Headquarter	Doha / Qatar Value Engineering & Re-Design of New HQ of Shell Gas Plant Client : <i>Strabag Dubai Branch Office</i>
2007 - 2008	Injazat Data Centre	Abu Dhabi / United Arab Emirates Façade Lighting Design Client : <i>Züblin</i>
2007 - 2008	Legiobanka / Na Porici	Prague / Czech Republic Value Engineering & Artificial Lighting Design Client : <i>ORCO Property Group</i>
2007 - 2008	Vltavska Bubenska	Prague / Czech Republic Value Engineering & Artificial Lighting Design Client : <i>ORCO Property Group</i>
2007 - 2008	Vysocanska Brana	Prague / Czech Republic Value Engineering & Artificial Lighting Design Client : <i>ORCO Property Group</i>
2007 - 2008	City Gate	Bratislava / Slovakia Value Engineering & Artificial Lighting Design Client : <i>ORCO Property Group</i>
2007	Khalidiya Tower	Abu Dhabi / United Arab Emirates Façade Lighting Design Client : <i>DEWAN Architects / Abu Dhabi</i>
2007	Hagibor Office Building	Prague / Czech Republic

	Radio Free Europe	Artificial Lighting Design Client : <i>ORCO Property Group</i>
2005 - 2006	Commercial Bank of Abu Dhabi New Headquarters	Abu Dhabi / United Arab Emirates United Arab Emirates External Flood Lighting & Celebration Lighting, Entrance Design Architects: <i>AP.G / Abu Dhabi</i>
2005	Spielberk Business Park	Brno / Czech Republic Artificial Lighting Design for Office Type A+B Client : <i>CTP Invest</i>
2005	Urban Hall House of Industry	Vienna / Austria Electrical & Artificial Lighting Design <i>Architects : Schöffauer Architects / Vienna</i>
2004 - 2005	Chang Zhou Headquarter	Shanghai / China Artificial Lighting Design & Façade Lighting Design Client : <i>Chang Zhou Electrical Department</i>
2003	Jungmannova Plaza	Prague / Czech Republic Artificial Lighting Design & Outdoor Lighting Design Client: <i>Lordship CZ</i>
2001 - 2002	City Tower	Vienna / Austria Daylight- and Artificial Lighting Design Client : <i>Porr AG</i>
2001 - 2003	National Bank of Abu Dhabi New Headquarters	Abu Dhabi / United Arab Emirates External Flood Lighting & Celebration Lighting Client: <i>AP.G / Abu Dhabi</i>
2001 - 2002	Andel City	Prague / Czech Republic Artificial Lighting Design, Outdoor Lighting Client : <i>UBM Bohemia</i>
2001	Bedrovsky Dvur	Prague / Czech Republic Artificial Lighting Design Client : <i>Skanska Property Czech Republic</i>
2001 - 2003	Strabag Bauholding Headquarters	Vienna / Austria Artificial Lighting Design & Outdoor Lighting Design Client : <i>Strabag Bauholding</i>
2000	PSVS Headquarters	Prague / Czech Republic Indoor and Outdoor Lighting Design Client: <i>PSVS Czech Republic</i>
1998 - 1999	Kooperativa Insurance Company	Brno / Czech Republic Artificial Lighting Design &

	Headquarters	Outdoor Lighting Design Client : <i>Grym, Škrabal</i>
1997 - 1998	Warsaw Financial Centre	Warsaw / Poland Artificial Lighting Design and Consulting Client : <i>Porr a.s.</i>
1997 - 1998	BRC Warsaw	Warsaw / Poland Daylight Design for the Atrium Client: <i>Thaddäus Spsychala</i>
1983 - 1984	Mobile Oil Austria Headquarters	Vienna / Austria Complete Artificial Lighting Design Client : <i>Lippert & Partner</i>
1981 - 1982	S.A.R.I.-Verwaltung	Paris / France Artificial Lighting Design, Environmental Studies Client: <i>S.A.R.I.</i>
1981 - 1982	IBM - European Headquarters	Paris / France System Developments for Office Lighting Client : <i>Bertrand Bonnier (Paris)</i>
1980	IBM-Headquarters	London / United Kingdom Concepts for Energy Saving Systems Client: <i>Sir Denys Lasdun</i>

10.4 | Hotels & Residences

2021-ongoing	Diriyah Gate Hotel & Residences	Kingdom of Saudia Arabia Interior VE And Design Enhancements Client: <i>VX Studio UAE</i>
2021-ongoing	Golf Place	Dubai / UAE Interior & Façade VE And Design Enhancements Client: <i>Dewan Architects</i>
2020-ongoing	Vision Glattburg	Switzerland Interior VE And Design Enhancements Client: <i>Porr Suisse AG</i>
2019-2020	Bneid Al Qar	Kuwait Interior, Façade, & Landscape Lighting Client: <i>PACE</i>
2019-ongoing	OAG Aviation Boulevard	Muscat / Oman Interior, Façade, & Landscape Lighting Client: <i>Attkins Oman</i>
2019-ongoing	Intercontinental Hotel Muscat	Muscat / Oman Interior, Façade, & Landscape Lighting Client: <i>Attkins Oman</i>
2019-ongoing	Millennium Hotel	Al Riyadh / SA Interior, Façade, & Landscape Lighting Client: <i>Dewan Architects</i>
2018-ongoing	Marriott RAK	Ra's al Khaima / UAE Interior, Façade, & Landscape Lighting Client: <i>Meinhardt Group</i>

2017-2018	H09 Al Mouj Rayhaan Hotel	Bushar / Oman Façade Lighting Peer Review & New Design Client: <i>Attkins Oman</i>
2016-ongoing	Intercontal RAK	Ra's al-Khaima / UAE Façade & Landscape Lighting for Re-Design of Resort Client: <i>P&T Architects</i>
2016-2018	Hampton by Hilton	Dubai / UAE Internal, Façade & Landscape Lighting Client: <i>Al Wasl</i>
2015-ongoing	Mozoon Towers Hotels	Doha / Qatar Interior & Landscape Lighting Client: <i>MZP, SC Design, Francis Landscape</i>
2014-ongoing	P&T Saraya Jordanien	Jordan Interior, Exterior, Façade, Landscape and Streeting Lighting Deisgn of Hotels, Conference Center & Office Building Client: <i>P&T Architects</i>
2014-2015	Langham Hotel	Doha / Qatar Internal Lighting Client: <i>MDI Interior Design Dubai</i>
2014-2015	P&T North Gate KSA	Riyadh / Saudi Arabia Hotel and Private Residences Interior, Exterior, Façade and Landscape Lighting Design Client: <i>P&T Architects</i>
2013-2016	La Ville Hotel Dubai	Dubai / UAE Hotel Interior, Exterior, Façade & Landscape Lighting Design Client: <i>Woods Bagot Architects</i>
2012-2017	Hampton by Hilton	Dubai / UAE Hotel Inteior, Exterior, Façade & Landscape Lighting Design Client: <i>Al Wasl</i>
2010 - 2014	Bloom Central Marriott Height : 111m	Abu Dhabi / UAE Façade Lighting Design Client : <i>Heberger Engineering</i>
2010	Gesundheitsresort	Gars am Kamp / Austria Value Engineering Client : <i>VAMED</i>
2009 - 2013	Kempinski Hotel	Vienna / Austria Interior Lighting Design & External Façade Lighting Design Client: <i>Porr Solution</i>

2009 - 2011	Hilton Hotel	Visegrad / Hungary Value Engineering & Re-Design of all parts of the Hilton Hotel, internal & external Client: <i>Tourist Projects</i>
2009 - 2010	JW Marriott	Baku / Azerbaijan Interior Lighting Design & Façade Lighting Design Client: <i>Strabag Bauholding</i>
2008 - 2009	Hard Rock Hotel	Dubai / United Arab Emirates External Façade Lighting Design & Electrical Engineering Design Client: <i>WS Atkins & Partners Overseas</i>
2008 - 2009	Tauern SPA	Kaprun / Austria Artificial, Outdoor & Façade Lighting Design of the complete Hotel and SPA areas, including all rooms Client : <i>VAMED / Linz - Austria</i>
2006 - 2007	Dusit Hotel	Abu Dhabi / United Arab Emirates Design of all public spaces, including lobby, restaurants, conference rooms, ball rooms, Outdoor & façade lighting design Client : <i>Al Bayaty Architects / Abu Dhabi</i>
2006	Hotel Mansion + Casino	St.Petersburg / Ukraine Interior Lighting Design & Façade Lighting Design Client : <i>VA TECH</i>
2003 - 2005	Hotel Euro Disney	Paris / France Artificial Lighting Design Client: <i>Porr Ltd / Vienna</i>
2003 - 2005	Royal Palace Hotel	Jeddah / Saudi Arabia Outdoor Lighting Design Client : <i>SAS Salem Agencies&Services Corp.</i>
2003 - 2005	Emirates Palace Hotel	Abu Dhabi / United Arab Emirates Control Equipment Design for Domes Client : <i>Edison Lighting ME LTD</i>
2003	Hotel	Prague / Czech Republic Outdoor Lighting Design, Study for Artificial Lighting Client: <i>Margheri Group</i>
2002	JW Marriott	Prague / Czech Republic Outdoor Lighting Design Client: <i>Strabag CZ</i>
2002 - 2005	Hotel Hilton	Jeddah / Saudi Arabia Outdoor Lighting Design Client : <i>SAS Salem Agencies&Services Corp.</i>

2001 - 2003	Hotel Intercontinental	Warsaw / Poland Interior Lighting Design & Façade Lighting Design Client : <i>Porr AG</i>
2001	Hotel Don Giovanni	Prague / Czech Republic Lighting Control System Client: <i>Archina , Arch. Nahálka</i>
2001 - 2002	Andel's Hotel	Prague / Czech Republic Artificial Lighting Design & Outdoor Lighting Design Client : <i>UBM Bohemia</i>
2001	Le Palais	Prague / Czech Republic Daylight- and Artificial Lighting Design Client : <i>Vienna International</i>
1999 - 2000	Hotel Four Seasons	Prague / Czech Republic Artificial Lighting Design & Outdoor Lighting Design Client : <i>Campenon Bernard</i>
1998 - 1999	Alcron SAS	Prague / Czech Republic Artificial Lighting Design - Consulting Client: <i>Archina , Arch. Nahálka</i>
1980 - 1983	JW MARRIOTT	Vienna / Austria Artificial Lighting Design, Consulting on Daylight Systems Client: <i>Marriott PCC</i>

10.5 | Banks and Insurance Companies

2015	CBO	Oman Canopy Lighting Design & Calculations Client: <i>Central Bank of Oman</i>
2013	IU-NBB Bahrain National Bank Bahrain	Bahrain Mock-up and Concept for Façade Lighting on existing Building Client: <i>Innovations Unlimited ME</i>
2007 - 2008	Legiobanka / Na Porici	Prague, Czech Republic Value Engineering & Artificial Lighting Design Client : <i>ORCO Property Group</i>
2005 - 2006	Commercial Bank of Abu Dhabi New Headquarters	Abu Dhabi / United Arab Emirates External Flood Lighting & Celebration, Lighting, Entrance Design Client: <i>AP.G / Abu Dhabi</i>
2005	Commercial Bank of Abu Dhabi	Abu Dhabi / UAE External Facade Lighting Design Client : <i>Turner International</i>
2001 - 2003	National Bank of Abu Dhabi New Headquarters	Abu Dhabi / United Arab Emirates External Flood Lighting & Celebration Lighting Client: <i>AP.G / Abu Dhabi</i>
2002	National Bank Headquarter	Bratislava / Slovakia Indoor Lighting Design Architect: BKPŠ Client: <i>Siemens SK</i>

1998 - 1999	Kooperativa Insurance Company Headquarter	Brno / Czech Republic Artificial Lighting Design & Outdoor Lighting Design Architects : <i>Grym, Škrabal</i>
1997-1998	Warsaw Financial Centre	Warsaw / Poland External Façade Lighting Design Client: <i>Porr a.s.</i>
1996	BANK AUSTRIA AG Branch Stock-im-Eisen-Platz	Vienna / Austria Artificial Lighting Design, Environmental Consulting Architects: <i>KROKUS</i>
1994 - 1995	BANK AUSTRIA AG Branch Bank Am Hof	Vienna / Austria Artificial Lighting Design, Environmental Consulting Architects: <i>Czech, Sprinzi</i>
1993	Société Generale Paris	Paris / France Artificial Lighting Design Architect: <i>F. Urquijo</i>
1993	Erste Österreichische HQ Am Graben	Vienna / Austria Artificial Lighting Design, Environmental Consulting Architect: <i>Prof. Fehrer</i>
1988 - 1994	BANK AUSTRIA AG Headquarters	Vienna / Austria Complete Daylight and Artificial Lighting Design, System developments Architects: <i>Domenig, Podsedensek</i>
1988 - 1989	Tanfield House Data C.	Edinburgh / United Kingdom Development of Daylight Systems Architect: <i>M. Laird & Partners</i>
1987 - 1988	Bankers Trust Broadgate	London / United Kingdom Lighting Development for the Dealers' Room, Environmental Studies Architects: <i>Heery Int., SOM</i>
1987 - 1988	Standard Life Tanfield	Edinburgh / United Kingdom Daylight and Artificial Lighting Design Architect: <i>M. Laird & Partners</i>
1985 - 1986	Old Billingsgate Market CITICORP.INT.	London / United Kingdom Daylight Design, Environm.Consulting Architect: <i>Richard Rogers</i>
1983 - 1986	Hongkong & Shanghai Banking Corporation	Hongkong / China Complete Daylight and Artificial Lighting Design, development of integrated lighting - ceiling systems, environmental design Architect: <i>Norman Foster</i>

1984 - 1985	LLOYD'S Headquarters	London / United Kingdom Artificial Lighting Design, Consulting on Daylight Systems Architect: <i>Richard Rogers</i>
1984 - 1985	CGD Lisbon	Lisbon / Portugal Design of Daylight Systems Architect: <i>Building Design PS</i>
1980 - 1982	Raiffeisenkassen	Melk, Hollabrunn, Obergrafendorf / Austria Lighting Design, Energy Concepts
1981 - 1982	Postal Administration	Vienna / Austria Design of integrated lighting-HVAC- Ceiling Systems Architects: <i>GP-Plan</i>
1981	Postal Savings-Bank Linz	Linz / Austria Complete Lighting Design Architect: <i>Neumann & Frank</i>
1979 - 1981	Employee's Pensionary Insurance	Vienna / Austria System developments, Environmental studies Architects: <i>Hlaweniczka, Lintl, Jakubec</i>
1980	Postal Office Neutorgasse	Vienna / Austria Optimization of Lighting systems, Energy concept Architect: <i>Hammerschmid</i>
1980	HYPO - BANK	St. Poelten / Austria Lighting Design, Ceiling concept Architect: <i>Pfoser</i>
1979 - 1980	Bank Austria AG (ehem. Zentralsparkasse)	Vienna, Innsbruck / Austria Energy Concepts and Environmental Design on 16 branches, Optimization of Lighting Systems in Cash Desk Areas etc.
1978 - 1980 1976 - 1980	European Investment Bank	Luxemburg Artificial Lighting Design Architect: <i>Sir Denys Lasdun</i>
1978 1977 - 1978	Creditanstalt Bankverein	Vienna / Austria Lighting Design on 2 branches Architect: <i>Hlaweniczka</i>

10.6 | Shopping- and Entertainment Centers

2019-ongoing	Hessa Al Mubarak	Kuwait Interior, Façade, & Landscape Lighting Client: <i>Private Client</i>
2018-ongoing	Riyadh Mall A17-11	Riyadh / SA Façade & Exterior Lighting Client: <i>Dewan Architects</i>
2017	Al Safadi – The Palm	Dubai / UAE Interior Lighting Design Client: <i>Private Client</i>
2016-on hold	Kings Walk Mall	Dubai / UAE Façade & Landscape Lighting Client: <i>Dewan Architects / Assaudia</i>
2016-2017	Fairmont the Palm	Dubai / UAE Interior Lighting Design Concept Client: <i>Stickman Architects</i>
2016	Al Safadi Restaurant	Dubai / UAE Interior Lighting Design Client: <i>Private Client</i>
2014-2015	City Gate Wien - Stumpf	Vienna / Austria Mall Interior and Emergency Lighting Design Client: <i>Stumpf Development GmbH</i>
2014	Wasl Vita Mall	Dubai / UAE Review existing Façade Lighting Client: <i>Al Wasl</i>
2013	City Center Wörgl Shopping Mall	Wörgl / Austria Calculation and Measurement of Daylighting Client: <i>Center Management</i>

2010-2011	Bawabat Al Sharq Mall	Abu Dhabi / UAE Interior Lighting Client: <i>Cloissal Interiors LLC</i>
2010 - 2011	Baniyas Mall	Abu Dhabi / UAE Interior Lighting Client: <i>Cloissal Interiors LLC</i>
2007 - 2008	Outletcentre Roses	Zagreb / Croatia Interior Lighting Design & Façade Lighting Design Client: <i>Architect Kiekenap / Vienna</i>
2007 - 2008	Polus Shopping Centre	Constanta / Romania Interior Lighting Design & Façade Lighting Design Client: <i>TriGranit</i>
2007 - 2008	Polus Shopping Centre	Clui / Romania Interior Lighting Design & Façade Lighting Design Client: <i>TriGranit</i>
2006	Hotel Mansion + Casino	St. Petersburg / Russia Interior & Façade Lighting Design Client: <i>VA TECH</i>
2006	Kaufland Shopping Centre	Pitkov / Poland Cost Saving Consultancy Works Client: <i>Strabag Bauholding AG</i>
2005 - 2007	Palladium Shopping Centre	Prague / Czech Republic Cost Saving Consultancy Works Client: <i>EZ Praha / VA TECH</i>
2005	Steiner Tor Shopping Centre	Krems / Austria Artificial & Outdoor Lighting Design Client: <i>BOE / Targetti Austria GmbH</i>
2005 - 2006	Silesia City Centre	Katowice / Poland Cost Saving Consultancy Works Client: <i>Strabag Bauholding AG</i>
2004 - 2005	EDEN Shopping Mall	Prague / Czech Republic Mall & Outdoor Lighting Design Client: <i>Strabag CZ</i>
2004	Slovansky Dum - Shopping Centre	Prague / Czech Republic Mall & Landscape-Lighting Concept Client: <i>COPA Investment</i>
2003 - 2005	Marina Mall Extension	Abu Dhabi / United Arab Emirates Artificial & Outdoor Lighting Design Client: <i>ACG Abu Dhabi</i>
2003 - 2004	Palais Corso	Vienna / Austria Artificial Lighting Design Client: <i>First Vienna Hotel Ltd.</i>
2003 - 2004	Ringstrassen Galerien	Vienna / Austria

		Artificial Lighting Design Concept Client: <i>Zürich Kosmos Insurance Co.</i>
2003 - 2004	Olympia Shopping Centre	Karvina / Czech Republic Artificial Lighting & Outdoor Lighting Design Client: <i>Retail Development Company / CZ</i>
2003	Olympia Shopping Centre	Olomouc / Czech Republic Artificial Lighting & Outdoor Lighting Design Client: <i>Retail Development Company / CZ</i>
2003 - 2004	Olympia Shopping Centre	Plzen / Czech Republic Artificial Lighting & Outdoor Lighting Design Client: <i>Retail Development Company / CZ</i>
2002 - 2003	Department Store STEFFL	Vienna / Austria Façade Outdoor Lighting Design - Concept Client: <i>Palmers AG</i>
2002 - 2003	ZPA Jinonice	Jinonice / Czech Republic Daylight, Artificial & Outdoor Lighting Design Client: <i>Aukett Europe / UK</i>
2002 - 2003	Flora Plaza	Prague / Czech Republic Daylight, Artificial & Outdoor Lighting Design Client: <i>Africa Israel Investments</i>
2002	Freeport Hate	Hate / Czech Republic Artificial Mall & Outdoor Lighting Design Client: <i>Strabag CZ</i>
2002	Shopping Centre Albert	Prague / Czech Republic Artificial Lighting Design Client: <i>Concord Invest CZ</i>
2002	Shopping Centre Elblag	Elblag / Poland Artificial Lighting Design Client: <i>Ahold Real Estate</i>
2001 - 2002	Shopping Centre Soravia	Bratislava / Slovakia Daylight, Artificial & Outdoor Lighting Design Client: <i>Soravia Baurträger</i>
2001 - 2002	Olympia Shopping Centre	Teplice / Czech Republic Artificial Lighting Design & Outdoor Lighting Client: <i>TriStannifer / CZ</i>
2001	Village Cinemas Cerny Most	Prague / Czech Republic Multifunctional Hall Artificial Lighting Design

Client: *Chapman & Taylor*

2001	Brno City Centre	Brno / Czech Republic Daylight- and Artificial Lighting Design Client: <i>Unistav</i>
2001	Olympia Shopping Centre	Mlada Boleslav / Czech Republic Artificial & Outdoor Lighting Design Client: <i>TriStannifer / CZ</i>
2000 - 2001	Stará Celnice	Prague / Czech Republic Artificial & Outdoor Lighting Design Client: <i>Ikano CZ</i>
2000 - 2001	Velký Špalíček Shopping & Entertainment C	Brno / Czech Republic Artificial & Outdoor Lighting Design Client: <i>UBM Bohemia</i>
1999 - 2001	AEZ - Stadtpark-Centre 1999 - 2001	Vienna / Austria Daylight and Artificial Lighting Design Client: <i>Porr AG</i>
1999	Detský Dum	Prague / Czech Republic Artificial Lighting Design Client: <i>Olredo</i>
1997	Cerný Most	Prague / Czech Republic Mall Lighting Design
1995 - 1996	EKZ Fischapark	Wiener Neustadt / Austria Daylight and Artificial Lighting Design Client: <i>Architect Brunner</i>
1987 - 1991	WAITROSE Food Selling Company	Great Britain Complete Daylight and Artificial Lighting Design for 5 branches Client: <i>John Lewis PS</i>
1985 - 1990	JOHN LEWIS - Kingston Shopping Centre	London - Kingston / United Kingdom Design of Daylight and Artificial Lighting Systems Client: <i>Architects ABK</i>

10.7 | Airports

2008 - 2011	Zurich International Airport Dock B	Zurich / Switzerland Arrival & Departure Hall Artificial & Outdoor Lighting Design Client: <i>Burkhardt & Partner AG / Zurich</i>
2007 - 2008	Dubai International Airport Concourse 2 / Terminal 3	Dubai / United Arab Emirates Design of General Lighting for all Public Spaces and Effect Lighting Design for all Public Spaces at Departure Gates Client: <i>Dubai Civil Aviation</i>
2005 - 2007	Dubai International Airport Terminal 3 Building - Phase 2 Departure & Arrival Hall	Dubai / United Arab Emirates Architectural Lighting Design Client: <i>Dubai Civil Aviation</i>
1999	Linz Airport	Linz / Austria Mall Design, Experience Shopping Client: <i>Design Team Dresden/Germany</i>
1992 - 1993	Graz Airport	Graz / Austria Daylight and Artificial Lighting Design for the Central Mall Client: <i>Riegler & Riewe</i>
1991 - 1993	Vienna International Airport Annex	Vienna-Schwechat / Austria Artificial Lighting Design Special Developments Client: <i>Architects McColl (London)</i>
1987 - 1988	Glasgow Airport	Glasgow / United Kingdom Complete Day-/ Artificial Lighting D. Client: <i>Sir Basil Spence</i>

1985 - 1986

Manchester Airport

Manchester / United Kingdom
Design and Consulting on Daylight
and Artificial Lighting Systems
Client: *Building Design Partnership*

10.8 | Theaters

2003 - 2005	Reduta	Brno / CZ Artificial Lighting Design Architect: <i>DRNH</i>
2002 - 2003	Vienna City Hall	Vienna / A Multifunctional Hall Artificial Light & TV Lighting for Sport and Event Wiener Veranstaltungsstätten GesmbH
2001	Dejvické divadlo	Prague 6 / CZ Restauration, Optimization Architect: <i>ŠHA Šafer, Hájek</i>
1996 - 2000	Vienna Concert Hall	Vienna / Austria Artificial Lighting Design Restauration, Optimization Architect: <i>Prof. Puchhammer</i>
1994-1996	Cultural District	St.Pölten / Austria External Façade Lighting Design Client: <i>Katzberger</i>
1994 - 1996	Festspielhaus	St.Pölten / Austria Artificial Lighting Design, Outdoor Lighting Design Special Lighting Solutions Architect: <i>K. Kada</i>
1989	Croydon Town Hall and Library	London Croydon / UK Preliminary Design for Daylight and Artificial Lighting Systems Client: <i>Royal Borough of Croydon</i>

10.9 | Museums

2020-2021	Papyrus Museum	Vienna / Austria Interior Lighting Client: <i>BWM Architects</i>
2020-ongoing	The Scientific Center of Kuwait	Kuwait Interior & Façade Lighting Client: <i>PACE</i>
2019-2021	Austrian National Library	Vienna / Austria Interior Lighting Client: <i>HTB-Plan</i>
2013	IU QMA-DHE	Doha / Qatar Production, Shipment and Installation of 20 tons pre-fabricated Lighting elements for Exhibition Client: <i>Innovations Unlimited ME</i>
2005	Mies van der Rohe Awards Exhibition	Prague / Czech Republic Effect Lighting Client: <i>D3A</i>
2004	Ladislav Sutnar Prague	Prague / Czech Republic Effect Lighting Client: <i>Olgoj Chorchoj, Arch. Fronek</i>
2003	Gallery of Modern Arts	Most / CZ Artificial Lighting Design Client: <i>Gallery Most</i>
2002	Prague Castle	Prague / CZ Artificial Lighting Design Architect: <i>Borek Šípek Architects</i>
2002	Dum Pánu z Kunštátu Gallery of Modern Arts	Brno / CZ Artificial Lighting Design Architect: <i>A3, Cerný, Poláček</i>

2002	Minoriten Kloster Wels	Wels / A Artificial Lighting Design, Environmental Design Architect: <i>Grünberger</i>
2002	Museum of Ethnology	Wels / A Development of fiberoptic systems Architect: <i>Grünberger</i>
2001	Dum U Kamenného zvonu	Prague / CZ Artificial Lighting Design Client: <i>National Gallery</i>
1999 - 2000	Museum of Work	Steyr / A Artificial Lighting Design, Control Equipment Design, Environmental Consulting Architect: <i>Grünberger</i>
1999	House of Artists	Vienna / A Artificial Lighting Design, Environmental Consulting Architect: <i>Grünberger</i>
1998 - 1999	Stamp Museum TRODAT	Wels / Austria Artificial Lighting Design Electrical & Emergency Lighting Design, Environmental Consulting, Daylight Study of Exhibition Architects: <i>Grünberger, Holter</i>
1996 - 1998	Albertina Annex	Vienna / Austria Daylight and Artificial Lighting Design, Model Studies Architects: <i>Steinmayr, Mascher</i>
1997	Museum of Ethnology	Vienna / Austria Artificial Lighting Design, Environmental Consulting Architect: <i>Sepp Müller</i>
1994	New Gallery Graz	Graz / Austria Preliminary Artificial Lighting Design Architect: <i>Riegler & Riewe</i>
1993 - 1994	E. A. GENERALI Foundation	Vienna / Austria Artificial Lighting Design, Environmental consulting Architects: <i>Schönfeld, Jabornegg & Pálffy</i>
1993	Art Forum BANK AUSTRIA	Vienna / Austria Artificial Lighting Design, Environmental consulting Architects: <i>Czech, Sprinzi</i>

1992	Museum of Ethnology	Vienna / Austria Artificial Lighting Design, Environmental consulting Architect: Zweymüller
1988 - 1991	Museum of Theatre Palais Lobkowitz	Vienna / Austria Complete Artificial Lighting Design, Lighting of side-scene models Architect: <i>Prof. Mang</i>
1983 - 1986	Treasury Chamber Vienna	Vienna / Austria complete Artificial Lighting Design Architect: <i>Prof. Mang</i>
1978	Boymans-van-Benningen Museum	Rotterdam / NL Energy Concept, Optimization of Lighting, Systems for Conservatorial reasons Client: <i>City of Rotterdam</i>

10.10 | Places of Worship

2013-2014	Al Aziz Mosque AP.G	Abu Dhabi / UAE Façade Lighting Client: <i>AP.G Architects</i>
2007	Mormon Church	Kiev / Ukraine External Façade Lighting Design Client: <i>Strabag</i>
2007	H.H.Sheikh Salama Mosque	Al Ain / UAE External Façade Lighting Design Client: <i>AP.G Abu Dhabi</i>
2001	Synagogue	Liberec / Czech Republic Artificial Lighting Design & Effect Lighting Client: <i>SIAL</i>
1998-2004	Abbey of Admont	Admont / Austria Daylight and Artificial Lighting Design Client: <i>Prof. Wehdorn</i>
1990	Meditation Chapel Harbach	Harbach / Austria Development of glass elements, artificial lighting design Client: Private
1988	Church of Winzendorf	Winzendorf / Austria Artificial Lighting Design Client: <i>Reidinger</i>
1982	Chapelle Sanctuaire	Paris / France Artificial Lighting Design Client: Private

1981	Church of the Holy Ghost	Vienna / Austria Artificial Lighting Design Client: <i>Podrecca</i>
1978	Church of Südstadt	Vienna / Austria Artificial Lighting Design Client: <i>Düh</i>

10.11 | Urban Lighting Projects

2022-ongoing	Medical College	Jeddah/ SA Interior, Façade, & Landscape Lighting Client: <i>HKS Architects</i>
2021-ongoing	Emaar Beachfront	Dubai/ UAE Interior, Façade, & Landscape Lighting Client: <i>RMJM</i>
2021-ongoing	Misk City	Riyadh/ SA Interior, Façade, & Landscape Lighting Client: <i>RMJM</i>
2019-ongoing	Hessa Al Mubarak	Kuwait Interior, Façade, & Landscape Lighting Client: <i>PACE</i>
2018-ongoing	Riyadh Mall A17-11	Al Riyadh / SA Facade, & Exterior Lighting Client: <i>Dewan Architects</i>
2019-ongoing	OAG Aviation Boulevard	Muscat / Oman Interior, Facade, & Landscape Lighting Client: <i>Atkins Oman</i>
2019-ongoing	Intercontinental Hotel Muscat	Muscat/ Oman Interior, Facade, & Landscape Lighting Client: <i>Atkins Oman</i>
2019-ongoing	UTC School Cairo	Cairo/ Egypt Facade, & Landscape Lighting Client: <i>Dewan Architects</i>
2019-ongoing	Millennium Hotel	Al Riyadh / SA Interior, Facade, & Landscape Lighting Client: <i>Dewan Architects</i>

2018-ongoing	Marriott RAK	Ra's al Khaima/ UAE Interior, Façade, & Landscape Lighting Client: <i>Meinhardt Group</i>
2018-2019	ADNOC HQ Campus	Abu Dhabi / UAE Façade & Landscape Lighting Client: <i>Adnoc</i>
2017-2018	Dubai Water Canal D16-58	Dubai / UAE Façade, Public Areas, Apartments & Landscape Lighting Design Client: <i>Dewan Architects</i>
2017-on hold	Dubai Health Care City DHCC D16-41	Dubai/ UAE Façade, Public & Landscape Lighting Design Client: <i>NSHMI</i>
2017-2018	16003 Residential Mid-rise JVC	Dubai / UAE Façade, Public & Landscape Lighting Design Client: <i>Taraf Properties</i>
2016-2018	Dubai Creek Harbour Residential	Dubai / UAE Façade, Interior & Landscape Lighting Client: <i>Dewan Architects</i>
2016-2017	JBH Car Park	Dubai / UAE Concept for Façade and Landscape Lighting, inc. Tennis Courts Client: <i>CVTec Engineers</i>
2016-2022	Intercontinental RAK	Ra's al-Khaima / UAE Façade & Landscape Lighting for Re- Design of Resort Client: <i>P&T Architects</i>
2016-on hold	Kings Walk Mall	Dubai / UAE Façade & Landscape Lighting Client: <i>Dewan Architects / Assaudia</i>
2016	Meraas Headquarters	Dubai / UAE Internal, Façade & Landscape Lighting Client: <i>Dewan Architects</i>
2016-2017	PO43- Residential Building	Dubai / UAE Internal, Façade & Landscape Lighting Client: <i>CVTec Engineers</i>
2015-2017	Tarabichi Medical Center	Dubai / UAE Internal, Façade & Landscape Lighting Client: <i>CVTec Engineers</i>
2015-on hold	EMPower Headquarters	Dubai/UAE Internal, Façade & Landscape Lighting Client: <i>P&T Architects</i>

2015-ongoing	Mozoon Towers Hotels	Doha / Qatar Interior & Landscape Lighting Client: <i>MZP, SC Design, Francis Landscape</i>
2015-2017	Apartment Building	Dubai / UAE Internal, Façade & Landscape Lighting Client: <i>Dewan Architects</i>
2015-2016	Sherena Building	Dubai / UAE Internal, Façade & Landscape Lighting Client: <i>CVTec Engineers</i>
2015-2016	Jumeirah Car Park	Dubai / UAE Façade, Landscape Lighting- Concept Client: <i>Confidential</i>
2015	CBO	Oman Canopy Lighting Design and Calculations Client: <i>Central Bank of Oman</i>
2014-ongoing	P&T Saraya Jordanien	Jordan Interior, Exterior, Façade, Landscape and Street Lighting Design of Hotels, Conference Center & Office Building Client: <i>P&T Architects</i>
2014-2016	Bourdillon Tower	Lagos / Nigeria Internal, Façade & Landscape Lighting Client: <i>P&T Architects</i>
2014-2015	P&T North Gate KSA	Riyadh / Saudi Arabia Hotel and Private Residences Interior, Exterior, Façade and Landscape Lighting Design Client: <i>P&T Architects</i>
2014-2015	Al Habib Office Building COWI	Oman Interior, Exterior, Façade & Landscape Lighting Design Client: <i>COWI</i>
2014-2015	Salmgasse 6 Warimpex	Vienna / Austria Interior, Exterior, Façade & Landscape Lighting Design Client: <i>Private Client</i>
2013-2014	Villa Dornaus	Vienna / Austria Interior & Exterior Lighting Design of a Private Residence Client: <i>Private Client</i>
2013-2016	La Ville Hotel Dubai	Dubai / UAE Hotel Interior, Exterior, Façade & Landscape Lighting Design Client: <i>Woods Bagot Architects</i>

2013-2014	RKP TAC Hartberg	Hartberg / Austria Façade, External, Landscape and Street Lighting Design Client: <i>Private Client</i>
2013	K&A Al Falah Validation	Abu Dhabi / UAE Validation and Value Engineering of existing Landscape, Park and Street Lighting Design Client: <i>Khatib & Alami</i>
2013	Meydan	Dubai / UAE Various Concepts of Façade, Feature and Landscape Lighting with Unique Effects on the Façade Client: <i>Meydan</i>
2012-2018	Hampton by Hilton	Dubai / UAE Internal, Faade & Landscape Lighting Client: <i>Al Wasl</i>
2012	Doha Katara	Doha / Qatar Landscape, Façade Lighting – Value Engineering – Concept Client: <i>Katara Management</i>
2011	Yamunotri	India Urban Development Client:
2011	ICON: Al Dahra Park	Dubai / UAE Landscape and Electrical Design – Concept Client: <i>ICON</i>
2011	ICON: Al Mannaseur Residential Park	Dubai / UAE Landscape and Electrical Design – Concept Client: <i>ICON</i>
2011	ICON: Park Al Ain	Al Ain / UAE Landscape and Electrical Design – Concept Client: <i>ICON</i>
2010-2011	ICON Presidential Palace AD PPP	Abu Dhabi / UAE Landscape and Street Lighting ad Development of a sophisticated custom made Pole and Luminaire Family Client: <i>ICON</i>
2010	Mangrove Place	Abu Dhabi / UAE External Façade Lighting Design Client: <i>UPA Urbanism Planning Architecture</i>

2007 - 2008	Polus Shopping Centre	Constanta / Romania Landscape Lighting Design including Parking areas Client: <i>TriGranit</i>
2007 - 2008	Polus Shopping Centre	Cluj-Napoca / Romania Landscape Lighting Design including Parking areas Client: <i>TriGranit</i>
2007-2008	Vitavska Bubenska	Prague / Czech Republic External Façade Lighting Design Client: <i>ORCO Property Group</i>
2007	Khalidiya Tower	Abu Dhabi / UAE External Façade Lighting Design Client: <i>Dewan Architects</i>
2007	Dubai Waterfront	Dubai / UAE Masterplan for Landscape, Interior and Exterior Areas Client: <i>Al Nakheel</i>
2005	Silesia City Centre	Katowice / Poland Landscape Lighting Design including Parking areas Client: <i>Strabag Bauholding AG</i>
2005	Zabeel Park Bridge	Dubai / United Arab Emirates Effect Lighting Design Client: <i>Waagner Biro Bin Butti</i>
2004 - 2005	Korunní Dvur Residential Block	Prague / Czech Republic Landscape Lighting Design Client: <i>Strabag CZ</i>
2005	Bleiburg Main Square	Bleiburg / Austria Public Areas Lighting Design Client: <i>Targetti Austria GmbH</i>
2003	Palace of H.H.Sheikh Hasher Al Maktoum	Dubai / UAE Landscape Lighting Design of all external areas Client: <i>Al Ahmadiyah Contracting</i>
2003	Olympia Shopping Center	Olomouc / Czech Republic Landscape Lighting Design including Parking areas Client: <i>RD Development / CZ</i>
2003	Olympia Shopping Center	Plzen / Czech Republic Landscape Lighting Design including Parking areas Client: <i>RD Development / CZ</i>
2002 - 2005	Hotel Hilton	Jeddah / Saudi Arabia Landscape Lighting Concept Design Client: <i>SAS Salem Agencies&Services Corp.</i>

2002 - 2005	Wallenstein Square	Vienna / Austria Landscape Lighting incl. Public Areas Client: <i>City of Vienna</i>
2002	French Lycee Public High School	Vienna / Austria Garden Lighting Design Client: <i>French Lycee Public High School</i>
2001 - 2002	Shopping Center Soravia	Bratislava / Slovakia Landscape Lighting Design
2001 - 2002	Olympia Shopping Center	Teplice / Czech Republic Landscape Lighting Design including Parking areas Client: <i>TriStannifer / CZ</i>
2001 - 2002	Andel City Offices, Hotel, Multiplex	Prague / Czech Republic Landscape & Façade Lighting Design Client: <i>UBM Bohemia</i>
2001	Olympia Shopping Center	Mlada Boleslav / Czech Republic Landscape Lighting Design including Parking areas Client: <i>TriStannifer / CZ</i>
2000 - 2001	Urban Redevelopment	Waidhofen/Ybbs / Austria Landscape & City Lighting Design Client: <i>Architect Beneder</i>
1994 - 1996	Cultural District	St.Poelten / Austria Landscape & City Lighting Design Client: <i>Katzberger, Kada, Hollein</i>

10.12 | Universities and Schools

2022-ongoing	Department Biomedizin	Basel/ Switzerland Interior Value Engineering Client: <i>Porr Suisse AG</i>
2022-ongoing	Medical College	Jeddah/ SA Interior, Façade, & Landscape Lighting Client: <i>HKS Architects</i>
2020-2021	Three Schools for MoE	Kuwait Interior, Façade, & Landscape Lighting Client: <i>PACE</i>
2019-ongoing	UTC School Cairo	Cairo / Egypt Landscape & Façade Lighting Client: <i>Dewan Architects</i>
1999	School in Blindenmarkt	Blindenmarkt / Austria Feasability Study, Daylight and Artificial Lighting Design Architect: <i>Weidenhöfer</i>
1994 - 1996	TU-Institutes Graz - Inffeld	Graz / Austria Daylighting Studies, Consulting on artificial lighting and environment Architect: <i>Riegler & Riewe</i>
1988 - 1996	University of Graz - RESOWI	Graz / Austria Complete Daylight and Artificial Lighting Design, Environmental Consulting Architects: <i>Domenig, Eisenköck</i>

1990 - 1993	Technical University of Graz	Graz / Austria Daylight and Artificial Lighting Design for the Main Hall, Environmental consulting Architect: <i>Domenig</i>
1988 - 1990	Government School of Sports St. Poelten	St. Poelten / Austria Daylight and Artificial Lighting Design for the 3-place-gym Architects: <i>Mistelbauer, Krainer</i>

10.13 | Industry Buildings

2019	Hausleiten	Austria Outdoor Lighting Design Client: <i>Strabag</i>
2016	Richemont Offices	Dubai / UAE Internal Lighting Design & Warehouse Calculations Client: <i>Richemont</i>
2011-2013	Boeralis Linz	Linz / Austria Interior, Exterior & Emergency Lighting Design & Electrical Design Client: <i>Pörner Gruppe</i>
2011-2013	Pörner Linz	Linz / Austria Interior, Exterior and Emergency Lighting of Chemical Industry Facilities Client: <i>Pörner Engineering Group</i>
2007 - 2008	Shell Gas Plant - Headquarter	Doha / Qatar Value Engineering & Re-Design of New HQ of Shell Gas Plant Client: <i>Strabag Dubai Branch Office</i>
2005	Urban-Hall House of Industry	Vienna / Austria Electrical & Artificial Lighting Design Client: <i>Schöffauer Architects</i>
1999	PRINT & MEDIA Printing house	Krems / Austria Daylighting Studies, Consulting on artificial lighting and environment Architect: <i>Ablinger</i>

1985	PLESSEY Factory	Plymouth / United Kingdom Design of Daylight and Artificial Lighting Systems for the Mall Architect: <i>Building Design PS</i>
1981-1983	RENAULT-Centre	London - Swindon / United Kingdom Design of Daylight and Artificial Lighting Systems Architect: <i>Norman Foster</i>
1981	KURIER Print Centre & Administration	Vienna / Austria Complete Artificial Lighting Design Architect: <i>Lippert & Partner</i>

10.14 | Multi-functional Projects

2019-ongoing	Hessa Al Mubarak	Kuwait Interior, Façade, & Landscape Lighting Client: <i>PACE</i>
2019-ongoing	OAG Aviation Boulevard	Muscat / Oman Interior, Façade, & Landscape Lighting Client: <i>Atkins Oman</i>
2019-ongoing	Intercontinental Hotel Muscat	Muscat / Oman Interior, Façade, & Landscape Lighting Client: <i>Atkins Oman</i>
2017-2018	Dubai Water Canal D16-58	Dubai / UAE Façade, Public Areas, Apartments & Landscape Lighting Design Client: <i>Dewan</i>
2015-ongoing	Mozoon Towers Hotels	Doha / Qatar Interior & Landscape Lighting Client: <i>MZP, SC Design, Francis Landscape</i>
2014-ongoing	P&T Saraya Jordanien	Jordan Interior, Exterior, Façade, Landscape and Street Lighting Design of Hotels, Conference Center & Office Buildings Client: <i>P&T Architects</i>
2013-2015	Abu Dhabi Sustainable Code Handbook	Abu Dhabi / UAE 550 Pages about Lighting Design for Public Realm Client: <i>Municipality of Abu Dhabi City</i>

2013-2014	Al Aziz Mosque AP.G	Abu Dhabi / UAE Façade Lighting Client: <i>AP.G Architects</i>
2012-2016	LKMI – Landeskrankenhaus Mistelbach	Mistelbach / Austria Design and Supervision of Hospital Plant, including all Surgery and Treatment Rooms Client: <i>VAMED</i>
2011 - 2013	Agency House 1150 Wien, Festival room	Vienna / Austria Stage-, Normal- and Safety- Lighting Electrical Design Client: <i>MA 34</i>
2011	Al Dahra Park	Al Ain / UAE Lighting and Electrical Design Client: <i>Icon Landscape Architect</i>
2011	Al Mannaseur Residencial Park	Al Ain / UAE Lighting and Electrical Design Client: <i>Icon Landscape Architect</i>
2011	Al Ain Park	Al Ain / UAE Lighting and Electrical Design Client: <i>Icon Landscape Architect</i>
2011	Donauturm Height : 252m	Vienna / Austria Interior Lighting Design Client: <i>Donauturm Betriebs GesmbH</i>
2010 - 2016	Stage Hospital	Mistelbach / Austria Exterior and Interior Lighting Design Client: <i>VAMED</i>
2010 - 2015	Kish Twin Tower Height : 85m	Kish Island / Iran Exterior and Interior Lighting Design Client: <i>Anboohsazane Homaye Tehran</i>
2010	Health Resort	Gars am Kamp / Austria Value Engineering Client: <i>VAMED</i>
2009	Spa & Wellness Oberlax	Vienna / Austria Value Engineering & Effect Lighting Design of internal areas Client: <i>VAMED</i>
2008	Tauern SPA	Salzburg / Austria Daylight & Artificial Lighting Design for a Wellness & Spa Resort Client: <i>VAMED / Linz</i>
2007 - 2008	Shell Gas Plant - Headquarter	Doha / Qatar Value Engineering & Re-Design of New HQ of Shell Gas Plant Client: <i>Strabag Dubai Branch Office</i>

2007	Dubai Waterfront	Jebel Ali / Dubai / United Arab Emirates Masterplan Guidelines for Landscape, Interior and Exterior Areas for the 80.000ha new City Development of the Dubai Waterfront Project Client: <i>Al Nakheel</i>
2007	Mormon Church	Kiev / Ukraine External Façade Lighting Design Client: <i>Strabag Bauholding AG</i>
2007	H.H.Sheikh Salama Mosque	Al Ain / United Arab Emirates External Façade Lighting Design Client: <i>AP.G / Abu Dhabi</i>
2007	Hagibor Office Building Radio Free Europe	Prague / Czech Republic Artificial Lighting Design Client: <i>ORCO Property Group</i>
2005	Mies van der Rohe Awards Exhibition Jaroslav Frágner Gallery	Prague / Czech Republic Effect Lighting Client: <i>D3A</i>
2004	Ladislav Sutnar Prague – New York Exhibition in Prague Castle	Prague / Czech Republic Effect Lighting Architect: <i>Olgoj Chorchoj, Arch. Fronek</i>
2004	Residential Flats	Vienna / Austria Daylight Study of Façade Client: <i>Sozialbau Wien</i>
2003 - 2004	EDEN - Shopping & Office	Prague / Czech Republic Study of existing Mall Design Client: <i>STRABAG Bauholding AG</i>
2003	Ski-Centre Angertal	Tyrol / Austria Concept of Artificial Lighting Client: <i>ALLPLAN Vienna</i>
2002 - 2003	Vienna City Hall (Stadthalle - Halle D)	Vienna / Austria Multifunctional Hall Artificial Light & TV Lighting for Sport and Events, Electrical & Emergency Lighting D. Client: <i>Wiener Veranstaltungs. GesmbH</i>
2002 - 2003	ZPA Jinonice Offices, Shopping Centre	Jinonice / Czech Republic Daylight & Artificial Lighting Design, Outdoor Lighting Design Client: <i>Aukett Europe / UK</i>
2002 - 2003	Flora Plaza Offices, Shopping Centre, Multiplex Cinema	Prague / Czech Republic Daylight & Artificial Lighting Design, Outdoor Lighting Design Client: <i>Africa Israel Investment</i>
2002 - 2003	Street Tunnels	Austria Development of a safety lighting system for recognition

2002	Prague Castle	Prague / Czech Republic Artificial Lighting Design Client: <i>Borek Sipek Architects</i>
2002	Cast Furniture Design Store	Prague / Czech Republic Artificial Lighting Design & Effect Lighting Client: <i>Cast s.r.o.</i>
2001 - 2004	Horse Race Track	Ebreichsdorf / Austria Artificial Lighting Design & Effect Lighting Client: <i>Magna Industries</i>
2001 - 2002	Andel City Offices,Hotel,Multiplex C.	Prague / Czech Republic Artificial Lighting Design, Conference Consulting, Outdoor Lighting Client: <i>UBM Bohemia</i>
2001	Calvin Klein	Prague / Czech Republic Artificial Lighting Design & Effect Lighting Architect: <i>Rudolf Netik</i>
2001	Konsepti Furniture Design Store	Prague / Czech Republic Artificial Lighting Design & Effect Lighting Client: <i>Konsepti s.r.o.</i>
2001	Synagogue	Liberec / Czech Republic Artificial Lighting Design & Effect Lighting Architect: <i>SIAL</i>
2001	Village Cinemas Cerný Most	Prague / Czech Republic Multifunctional Hall Artificial Lighting Design Architect: <i>Chapman & Taylor</i>
2001	AKH-Hörsaalzentrum	Vienna / Austria Daylight -and Artificial Lighting Design Control Equipment Design Architect: <i>Kopper</i>
2000 - 2004	U2-Leitwarte Erdberg	Vienna / Austria Daylight- and Artificial Lighting Design Architect: <i>Architektengruppe U-Bahn</i>
2000	Masarykova nemocnice Hospital	Ústí nad Labem / Czech Republic Artificial Lighting Design & Effect Lighting Architect: <i>DOMY</i>
1999 - 2001	AEZ - Stadtpark-Centre	Vienna / Austria Daylight and Artificial Lighting Design Client: <i>Porr AG</i>

1999 - 2000	Arzenal Design shop & Restaurant	Prague / Czech Republic Artificial Lighting Design & Effect Lighting Client: Šípek Associate Architect: <i>Borek Šípek Architects</i>
1999 - 2000	Chamber of Commerce NOE WIFI-Annex	St. Pölten / Austria Daylight Design Architect: <i>Prof. Domenig</i>
1999	Bookstore Kanzelsberger	Prague / Czech Republic Artificial Lighting Design & Effect Lighting Client: <i>Kanzelsberger</i>
1998 - 1999	WIFI Annex	St. Pölten / Austria Daylight Design Architect: <i>Prof. Domenig</i>
1998 - 2004	Abbey of Admont	Admont / Austria Daylight and Artificial Lighting Design, Environmental Consulting Architect: <i>Prof. Wehdorn</i>
1998	Austrian Lottery	Vienna / Austria Design of Studio Lighting Consulting on Stage Lighting Architects: <i>Veech, Lechner</i>
1994 - 1996	Hofburg Conference Centre "Redoutensäle"	Vienna / Austria Artificial Lighting Design Architect: <i>Prof. Wehdorn</i>
1993 - 1996	CrossRail Paddington	London / United Kingdom Daylight and Artificial Lighting Design Architects: <i>Alsop & Störmer</i>
1994 - 1995	Caritas Socialis Rennweg	Vienna / Austria Artificial Lighting Design, Environ. C. Architect: <i>Prof. Resch</i>
1994 - 1996	Cultural District Archive, Library	St. Pölten / Austria Artificial Lighting Design, Environmental consulting, Special lighting solutions Client: <i>Architects Katzberger, Bily</i>
1992 - 1994	Palais Harrach + Ferstel-Passage	Vienna / Austria Artificial Lighting Design Architect: <i>Prof. Wehdorn</i>
1991 - 1992	Mercury House	London / United Kingdom Daylight and Artificial Lighting Design for the Conference Area Architects: <i>Austin-Smith:Lord</i>

1991 - 1992	Jubilee Line Extension Bermondsey	London / United Kingdom Daylight and Artificial Lighting Design Architect: <i>Ian Ritchie</i>
1991 - 1992	Jubilee Line Extension Southwark	London / United Kingdom Daylight and Artificial Lighting Design Architects: <i>McCormac, Jamieson & Prichard</i>
1990	Meditation Chapel Harbach	Harbach / Austria Development of glass elements. Artificial Lighting Design
1988	Church of Winzendorf	Winzendorf / Austria Artificial Lighting Design Architect: <i>Reidinger</i>
1985	Hill House	London / United Kingdom Artificial Lighting Design for a private Swimming Hall Architect: <i>Sir Denys Lasdun</i>
1983	Chamber of Commerce	Vienna / Austria Artificial Lighting Design Architect: <i>Lippert & Partner</i>
1982	Chapelle Sanctuaire	Paris / France Artificial Lighting Design
1981 - 1982	OPEC FUND Administration	Vienna / Austria Artificial Lighting Design Architect: <i>Lippert & Partner</i>
1981	Church of the Holy Ghost	Vienna / Austria Artificial Lighting Design Architect: <i>Podrecca</i>
1981	Palais Rottal People's Attorneyship	Vienna / Austria Artificial Lighting Design Architect: <i>Prof. Mang</i>
1980	Vienna International Centre	Vienna / Austria Concepts for Energy Saving Systems
1978	Church of Südstadt	Vienna / Austria Artificial Lighting Design Architekt: <i>Düh</i>

10.15 | Value Engineering Projects

2022-ongoing	Kaserne Frauenfeld	Frauenfeld / CH Interior VE Client: <i>Porr Suisse AG</i>
2022-ongoing	Department Biomedizin	Basel / CH Interior VE Client: <i>Porr Suisse AG</i>
2022-ongoing	Neubau Rechencenter	Zürich / CH Interior VE Client: <i>Porr Suisse AG</i>
2021-ongoing	Kantonspolizei Bern	Bern / CH Interior VE Client: <i>Porr Suisse AG</i>
2021-ongoing	Diriyah Gate Hotel & Residences	Kingdom of Saudi Arabia Interior VE Client: <i>VX Studio UAE</i>
2020-ongoing	Vision Glattburg	Switzerland Interior VE Client: <i>Porr Suisse AG</i>
2021-ongoing	Golf Place	Dubai / UAE Interior Façade & Interior VE and Design Enhancements Client: <i>Dewan Architects</i>
2017-2018	H09 Al Mouj Rayhaan Hotel	Bushar / Oman Façade Lighting Peer Review & New Design Client: <i>CVTec Engineers</i>

2017	Plus Office Ontario Tower	Ontario / Canada Interior Lighting Design Client: <i>CVTec Engineers</i>
2016	CVTec Office	Dubai / UAE Internal Lighting – Refurbishment of CVTec HQ Client: <i>CVTec Engineers</i>
2015-2016	Sherena Building	Dubai / UAE Internal, Façade & Landscape Lighting Client: <i>CVTec Engineers</i>
2011	EKZ Gerasdorf	Gerasdorf / Austria Value Engineering Client: <i>Imtech GmbH</i>
2011	Stadion St. Pölten	St. Pölten / Austria Value Engineering Client: <i>Imtech GmbH</i>
2011	BBI Steigenberger Hotel Berlin Airport	Berlin / Germany Value Engineering Client: <i>BAM Deutschland</i>
2010 - 2011	Baniyas Mall	Abu Dhabi / UAE Value Engineering Client: <i>Cloissal Interiors LLC</i>
2010	Gesundheitsresort	Gars am Kamp / Austria Value Engineering Client: <i>VAMED</i>
2009	Spa & Wellness Oberlaa	Vienna / Austria Value Engineering & Effect Lighting Design of interior areas Client: <i>VAMED</i>
2009	Hilton Hotel	Visegrad / Hungary 60% cost saving in investment of the lighting budget & 50% energy optimization Client: <i>Tourist Projects</i>
2008	Sky Office Tower 30.000sqm office space	Duesseldorf / Germany 40% cost saving in investment of the lighting budget & 20% energy optimization Client: <i>ORCO Group / Germany</i>
2007 - 2008	Shell Gas Plant - Headquarter	Doha / Qatar 20% cost saving in investment of the lighting budget Client: <i>Strabag Dubai Branch Office</i>
2007 - 2008	City Gate 10.000sqm office space	Bratislava 20% cost saving in investment of the lighting budget Client: <i>ORCO Property Group</i>

2007 - 2008	Polus Shopping Centre 250.000sqm	Cluj-Napoca 50% cost saving in investment of the lighting budget & 30% energy optimization Client: <i>TriGranit Development</i>
2007 - 2008	Polus Shopping Centre 250.000sqm	Constanta 50% cost saving in investment of the lighting budget & 30% energy optimization Client: <i>TriGranit Development</i>
2007 - 2008	Legiobanka / Na Porici 33.000sqm office space	Prague 30% cost saving in investment of the lighting budget & 15% energy optimization Client: <i>ORCO Property Group</i>
2007 - 2008	Vltavska Bubenska 18.100sqm office space	Prague 20% cost saving in investment of the lighting budget Client: <i>ORCO Property Group</i>
2007 - 2008	Vysocanska Brana 8.600sqm office space	Prague 20% cost saving in investment of the lighting budget Client: <i>ORCO Property Group</i>
2007	Hagibor Office Building Radio Free Europe 25.000sqm office space	Prague 30% cost saving in investment of the lighting budget Client: <i>ORCO Property Group</i>
2005 - 2007	Palladium Shopping Centre 150.000sqm	Prague 25% cost saving in investment of the lighting budget Client: <i>EZ Praha / VA TECH</i>
2006	Kaufland Shopping Centre	Pitkov 40% cost saving in investment of the lighting budget & 20% Energy optimization Client: <i>Strabag Bauholding AG</i>
2005	Silesia City Centre 300.000sqm	Katowice 40% cost saving in investment of the lighting budget & 30% energy optimization Client: <i>Strabag Bauholding AG</i>
2002	Hotel Marriott	Prague / Czech Republic 40% cost saving in investment of the lighting budget Client: <i>Strabag CZ</i>
2000 - 2001	Florido Office Tower 35.000sqm office space	Vienna / Austria 50% cost saving in investment of the lighting budget & 40% energy optimization Client: <i>Porr AG</i>

10.16 | Competitions

2011	Yamunotri	India Urban Development Status: participated
2010	Dubai Pearl	Dubai / UAE Façade Lighting Design Status: participated
2010	Concert Hall Stavanger	Stavanger / Norway Artificial Lighting Design Status: participated
2010	Berliner Schloss	Berlin / Germany Artificial Lighting Design Status: participated
2009	Presidential Palace	Abu Dhabi / United Arab Emirates Landscape Lighting Design Status: participated
2009	JW Marriott Hotel	Baku / Azerbaijan Artificial Lighting Design Status: Nominated 1st Prize
2007	Lagoons Dubai	Dubai / UAE Landscape Lighting Design Status: Nominated 1st Prize
2007	Austrian Award	Vienna / Austria Innovative Consulting Status: Nominated 3rd Prize

2006	Federation Tower	Moscow / Russia Façade Lighting Design Status: Nominated 1st Prize
2005	Dubai Intern. Airport Terminal 3 / Phase 2	Dubai / UAE Artificial Lighting Design Status: Nominated 1st Prize
2001	National Bank of Abu Dhabi	Abu Dhabi / UAE Façade Lighting Design Status: Nominated 1st Prize

As a member of the Austrian Association
of Consulting Engineers represented by



11| Qualifications

Lichttechnische Planung - Lighting Design Austria e.U. is registered at the Austrian Commercial Register under the number FN 311 035, sole owner of the company is Mr. Helmut Regvart. Our membership number at Chamber of Commerce in Austria is 181004 (Department of Electrical Engineering / Consulting).

Furthermore, Lighting Design Austria is a member of the following organizations / associations:

- ✓ **ACA**
Austrian Consultants Association
- ✓ **EFCA**
European Federation of Engineering Consultancy Associations
- ✓ **FIDIC**
International Federation of Consultancy Engineers
- ✓ **LiTG**
Lighting Society Germany
- ✓ **LTG**
Lighting Society Austria
- ✓ **EIB**
European Installation Bus Association
- ✓ **Municipality Approvals:**
Mr. Helmut Regvart is a certified lighting designer, stage manager, and certified under the laws for events / Vienna.
- ✓ **Government of City New Delhi / India**
Lighting Design Austria is pre-qualified as a lighting design consultant office for the historical sites and monuments of the City of New Delhi.

11.1 | Austrian Award for Innovative Consulting

A brochure for 'Lighting Design Austria' is shown against a light blue background. The brochure is white with blue text and features the Austrian coat of arms. It lists various services and solutions for lighting design, including daylighting, artificial lighting, environmental studies, and scale models. A large, diagonal watermark on the brochure reads 'STAATSPREIS FÜR CONSULTING'.

Lighting Design Austria

contributes their special expertise from the first idea, preliminary design stage, through the detailed design, tender, construction and client operation.

Our scope of work:

Daylighting
Solutions for:

- facades, glazing, sun protection
- different rooflights, atria treatment, museum requirements
- redirecting light – sun protection
- redirecting light into depth of the room
- redirecting light for art work
- development of systems and alternatives

Artificial lighting

- individual design and development of lighting systems for desired environment
- integration of artificial lighting into daylight systems
- offices, special tasks and functions (VDU-work)
- conference facilities
- restaurants, recreational areas
- special buildings, museums, schools, churches, airports
- exterior lighting

Environmental studies
Studies of environment integrating effects of daylight, effects of sun, artificial lighting, environment task area, furniture, floor, wall, ceiling, colour, reflectance, texture, in regard to psychologic factors

Models in scale 1:10 (1:25)
Representation of the environment by models, avoiding abstract lighting numbers by visualizing actual brightnesses and effects on the environment

11.2 | Feedback from Clients

DUBAI WATERFRONT



Date: 08 November 2007-11-08
Ref: NKL/DWF/MAA/P1/GM/JS/LTR: 001

Consulting Engineers
Lighting Design Austria
A-3032 Eichgraben
Marienstrasse 23
Vienna, Austria
Europe, EU

FAO: Regvart Helmut/ Michael Koerner


Dear Sirs,


Subject: Lighting Design Austria, Consulting Engineers : Nakheel Consultancy Contract
Nakheel:Dubai Waterfront LLC – Madinat Al Arab: Phase 1 Development Plots
Lighting Design Austria : Contract for 'Sustainable City Lighting Checklists'

With reference to Lighting Design Austria 'Proposal for Consultancy Services' to be rendered to Nakheel: Dubai Waterfront, as dated 08 August 2007, and in respect of the subsequent preparation and signing of the above referenced 'Nakheel: Dubai Waterfront Consultancy Contract', it is confirmed that Lighting Design Austria have duly prepared and delivered 3 (three) no. 'Presentations' to Dubai Waterfront in Dubai, including the submission of an acceptable 'Sustainable City Lighting Design Report'.

Therefore, it is deemed that Lighting Design Austria have now completed their assignments and satisfied their contractual obligations under the Nakheel: Dubai Waterfront Contract, with the proviso that, should Dubai Waterfront require further visits to Dubai by Lighting Design Austria, then, such visits are available to Dubai Waterfront, under the terms of the Nakheel: Dubai Waterfront Contract.

Yours truly,


Jeff Austin
DWF: Director of City Relations


Dr. Jacques Skayem
DWF: Sustainability Engineer



12| Contact

Headquarter Austria:

Lighting Design Austria e.U.
Marienstrasse 23
3032 Eichgraben
Austria

Tel / Fax: +43 2773 435 34
Mobile: +43 664 16 00 140
E-mail: office@LDA.at
Web: www.LDA.at

Headquarter Czech Republic:

Prague:
nám. 14. října 1307/2
150 00 Praha 5
Česká republika

Tel.: +420 244 404 569
fax: +420 244 461 906
E-Mail: info@envispot.cz

Ostrava:
Havlíčkovo nábřeží 2728/38
702 00 Ostrava
Česká republika

Tel.: +420 595 172 657
fax: +420 595 172 658

Office Middle East:

Ms. Hala Nasrallah
Mobil: +971 56 827 85 89 Landline: +971 4 514 89 81
E-Mail: hala.nasrallah@LDA.at
Ontario Tower, Level HC, Dubai Business Bay - P.O.Box: 30409
Web: www.LDA.at

Directions

Our office in Eichgraben will welcome you based on pre-agreed schedules for meetings:

A) from Vienna on the A1 motorway exit Pressbaum and the federal highway 44 to Eichgraben (distance 25 km).

B) from Linz / Salzburg on the A1 motorway exit St. Christophen, then on the federal highway 19 to Neulengbach and the federal highway 44 to Eichgraben.

Version 3.0

© 2013, all rights reserved. Reproduction in whole or in part is prohibited without exception.